

Unique alpine chalet, beautifully designed for luxury and functionality in an exceptional natural setting

## EXCLUSIVE



## INFORMATION

Town:	Les Deux Alpes
Department:	Isère
Bed:	7
Bath:	6
Floor:	329 m2
Plot Size:	3499 m2

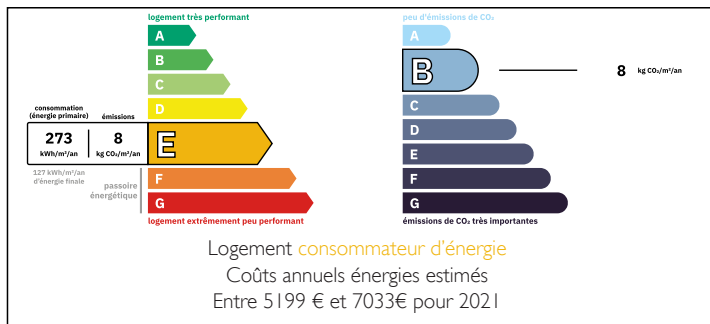
## IN BRIEF

Discover the unique charm of Chalet Morville, a beautifully designed and meticulously maintained property located in the idyllic mountain village of Venosc. Just minutes from the gondola linking directly to the renowned Les 2 Alpes ski resort—open for skiing until mid-July—this stunning chalet offers a rare blend of luxury, comfort, and functionality in an exceptional natural setting.

Whether you're seeking a spacious family home or a fully equipped rental chalet, Chalet Morville delivers on every level.

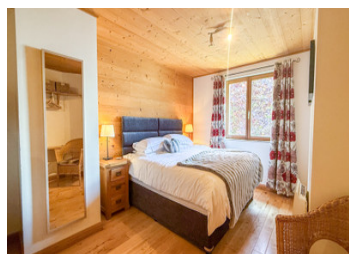


## ENERGY - DPE



NB. Quoted prices relate to euro transactions. Fluctuations in exchange rates are not the responsibility of the agency or those representing it. The agency and its representatives are not authorised to make or give guarantees relating to the property. These particulars do not form part of any contract but are to be taken as a general representation of the property. Any areas, measurements or distances are approximate. Text, photographs and plans, where applicable, are for guidance only. Leggett and its representatives have not tested services, equipment or facilities and cannot guarantee the same.

Particulars for off-plan purchases are intended as a guide only. Final finishes to the property may vary. Purchasers are advised to engage a solicitor to check the plans and specifications as laid out in their purchase contract with the developer.



## LOCAL TAXES

**Taxe foncière: 4582 EUR**

**Taxe habitation: EUR**

## NOTES

## DESCRIPTION

Key Features:

- 5 elegant ensuite bedrooms
- Separate caretaker's apartment
- Professional kitchen with large pantry
- Open-plan lounge and dining area with cosy wood-burning stove
- Split-level design with well-defined living spaces
- Gym, games room, cinema room
- Dedicated bike and boot rooms
- Infrared sauna and outdoor jacuzzi
- Large, beautifully landscaped garden with private woodland
- Covered terrace with panoramic views
- Private parking for up to 4 cars

Formerly run as a successful catered chalet, the property boasts glowing guest reviews on TripAdvisor that reflect its unique appeal, impeccable layout, and outstanding hospitality potential.

Outdoor Paradise – Year-Round Activities at Your Doorstep:

Set on the edge of the Ecrins National Park—the second largest in France—Chalet Morville offers immediate access to a vast range of activities for nature lovers and adrenaline seekers alike. From piste and extreme skiing to road cycling, white water rafting, via ferrata, and paragliding, the area is a true alpine playground throughout the seasons.

This is a rare opportunity to own a standout property in one of the most sought-after mountain locations in the French Alps.

Main room sizes

Ground floor

Games room 25.8 m<sup>2</sup>

Entrance hallway 9.6 m<sup>2</sup>

Gym 14.1 m<sup>2</sup>