

UNDER OFFER Move-In Ready 2-Bedroom Apartment for Sale in Historic Fontaine-Daniel, Near Mayenne, France

EXCLUSIVE



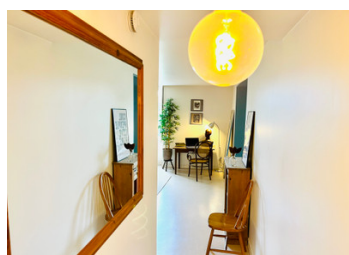
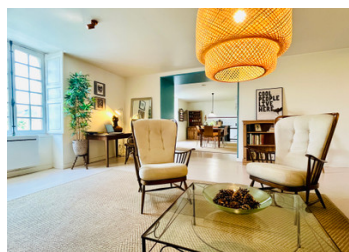
INFORMATION

Town:	Saint-Georges-Buttavent
Department:	Mayenne
Bed:	2
Bath:	1
Floor:	79 m2
Plot Size:	0 m2

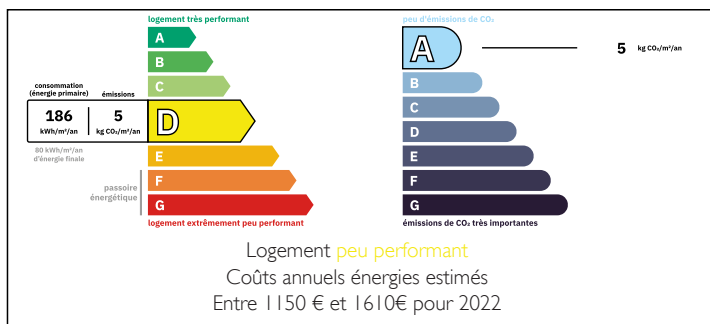
IN BRIEF

UNDER OFFER

A rare chance to purchase a stylish, move-in ready 2-bedroom apartment in the highly sought-after village of Fontaine-Daniel, just 5 km from Mayenne in northwestern France. Located only 30 km from Lassay-les-Châteaux and 292 km from Paris, this charming home offers the perfect balance of peaceful village living with convenient access to local amenities and the beautiful French countryside. Ideal for those seeking to downsize, relocate to France, or find a tranquil French property for sale in a scenic and historic location.

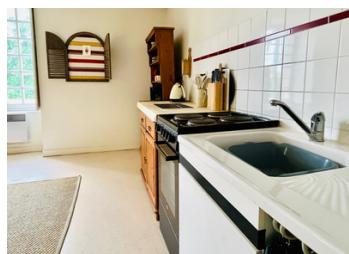


ENERGY - DPE



NB. Quoted prices relate to euro transactions. Fluctuations in exchange rates are not the responsibility of the agency or those representing it. The agency and its representatives are not authorised to make or give guarantees relating to the property. These particulars do not form part of any contract but are to be taken as a general representation of the property. Any areas, measurements or distances are approximate. Text, photographs and plans, where applicable, are for guidance only. Leggett and its representatives have not tested services, equipment or facilities and cannot guarantee the same.

Particulars for off-plan purchases are intended as a guide only. Final finishes to the property may vary. Purchasers are advised to engage a solicitor to check the plans and specifications as laid out in their purchase contract with the developer.



DESCRIPTION

Located in the heart of the picturesque village of Fontaine-Daniel, this beautifully presented 2-bedroom apartment for sale in Mayenne is set on the second floor of a charming period building. Offering a rare blend of village charm and modern comfort, the property is move-in ready and ideal for those seeking a peaceful yet connected lifestyle in northwestern France.

Designed for easy living, the apartment features a bright open-plan layout that seamlessly connects the living room, kitchen, and dining area. Whether you're enjoying a quiet morning or hosting friends in the evening, the warm, sociable atmosphere is perfect for every moment. A separate pantry adds convenient storage while maintaining a clean, organized space.

Both bedrooms are generously sized, offering flexibility for use as guest rooms, a home office, or tranquil sleeping areas. The property also includes a tastefully finished bathroom, a separate WC, and a central staircase—all combining practicality with character.

Set in a village known for its textile heritage, artisan atmosphere, and natural beauty, Fontaine-Daniel offers a unique way of life. Enjoy forest walks, lakeside picnics, and the charm of a friendly local community. Despite its rural setting, the apartment is just 5 km from Mayenne, where you'll find supermarkets, restaurants, schools, healthcare, and a lively weekly market.

Additional nearby towns include Gorron (22 km) and Ernée (24 km), providing even more amenities. For weekend getaways or commuting, Lassay-les-Châteaux—a stunning medieval village—is only 30 km away, while Paris is just 292 km from your doorstep, making this an...

LOCAL TAXES

Taxe foncière: 390 EUR

Taxe habitation: EUR

NOTES