

Gorgeous farmhouse with gîte in delightful gardens, pool, large barn - in the Layon wine-making countryside.

EXCLUSIVE



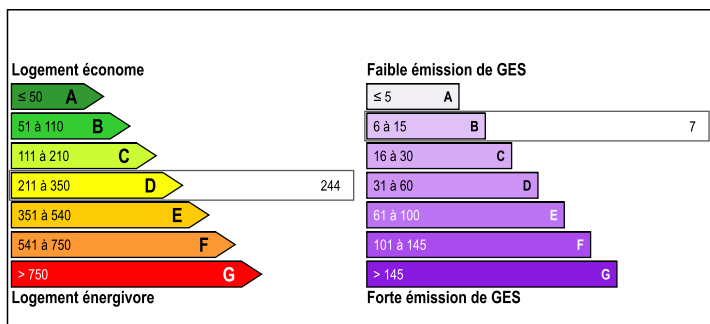
INFORMATION

Town:	Lys-Haut-Layon
Department:	Maine-et-Loire
Bed:	4
Bath:	3
Floor:	212 m2
Plot Size:	3545 m2

IN BRIEF

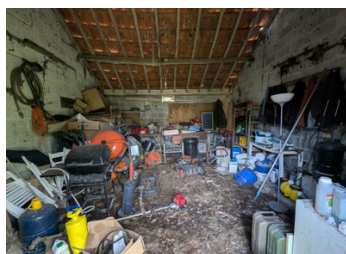
Close to the tourist hot-spots of Saumur (33km) and the Loire Valley, Doué-La-Fontaine (15km) and Puy-Notre-Dame (11km). Two bedroomed house + spacious two-bedroomed gîte. Calm, comfortable living with the generous grounds thoughtfully arranged into shady, private gardens, there is room for everyone.

ENERGY - DPE



NB. Quoted prices relate to euro transactions. Fluctuations in exchange rates are not the responsibility of the agency or those representing it. The agency and its representatives are not authorised to make or give guarantees relating to the property. These particulars do not form part of any contract but are to be taken as a general representation of the property. Any areas, measurements or distances are approximate. Text, photographs and plans, where applicable, are for guidance only. Leggett and its representatives have not tested services, equipment or facilities and cannot guarantee the same.

Particulars for off-plan purchases are intended as a guide only. Final finishes to the property may vary. Purchasers are advised to engage a solicitor to check the plans and specifications as laid out in their purchase contract with the developer.



LOCAL TAXES

Taxe habitation: EUR

NOTES

DESCRIPTION

Nearest airports Tour 118km, Nantes 123km, Poitiers 95km; TGV at Saumur and Angers. Equally perfect as a large family home, this longère-style property of house and converted barn is currently arranged to provide owners' accommodation and a spacious gîte, each with their own cottage gardens and outdoor dining areas, full facilities and independent access to the shared pool. Hidden discretely behind gates, total relaxation and calm in gorgeous setting.

Mostly double-glazed, recent decoration, woodburner in both living-rooms. (Electric radiator circuit in place.) Internet ready, satellite dishes for UK TV. In-ground swimming pool (9m x 5m). Septic tank. Furniture and fittings available at the right price.

Farmhouse / gîte :

Entrance hall / games area [11m²] with WC

Bathroom [7m²]

Kitchen [25m²]

Living room [34m²] with woodburner

Upstairs :

Landing with WC, storage space, and hidden immersion heater

Bedroom 1 [13m²]

Bedroom 2 [20m²]

(Attic room that could possibly provide extra accommodation)

Converted barn/Owners' accommodation:

Kitchen [20m²]

Shower room [3.5m²] with WC

Living room [36m²] with woodburner and doors to garden

Upstairs :

Bathroom with WC

Bedroom 1 [27m²]

2nd Bedroom to be finished [30m²]

Outside:

Pool house and terraced pool area,

Barn [58m²] with upper floor.