

Spacious village house with rare riverside garden. Quirky, comfortable and full of charm. Lettings potential.



INFORMATION

Town:	Mas-Cabardès
Department:	Aude
Bed:	4
Bath:	2
Floor:	235 m2
Plot Size:	280 m2

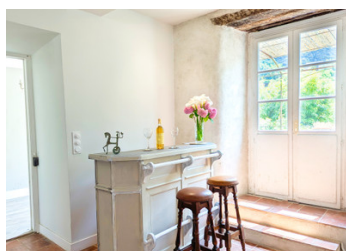
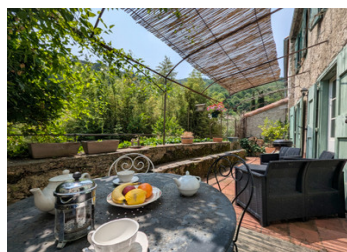
IN BRIEF

Come and see this rare find in the sunny south of France! A fine, roomy village house with its small garden and balcony terrace from which to enjoy the riverside position, and as an added bonus a wooded hillside plot just on the edge of the village for getting even further away from it all.

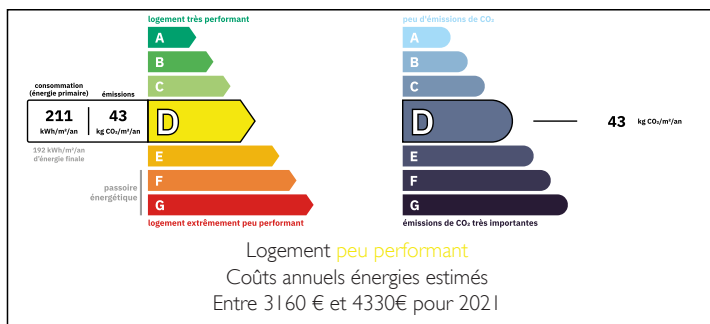
One reception room is cosy and snug, the other light and airy. Both look over the garden. The bedrooms are generous in size and offer heaps of charm as well as modern convenience. The attics (boarded) leave room for expansion if desired, and the cellar is a useful additional storage space.

Many of the modernization works required have been done. Some scope remains for adding your own stamp.

Proven lettings potential.

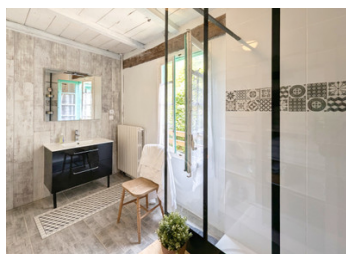


ENERGY - DPE



NB. Quoted prices relate to euro transactions. Fluctuations in exchange rates are not the responsibility of the agency or those representing it. The agency and its representatives are not authorised to make or give guarantees relating to the property. These particulars do not form part of any contract but are to be taken as a general representation of the property. Any areas, measurements or distances are approximate. Text, photographs and plans, where applicable, are for guidance only. Leggett and its representatives have not tested services, equipment or facilities and cannot guarantee the same.

Particulars for off-plan purchases are intended as a guide only. Final finishes to the property may vary. Purchasers are advised to engage a solicitor to check the plans and specifications as laid out in their purchase contract with the developer.



LOCAL TAXES

Taxe foncière: 1799 EUR

Taxe habitation: EUR

NOTES

DESCRIPTION

Enter through the ancient front door to a pleasant entrance hall.

To the left, the kitchen 15m²:

Fitted floor and wall cabinets and worktops, ceramic sink beneath window. Tiled floor. Electric hob with extractor hood over.

From entrance hall, through to dining room 32m²:

Open fireplace. Currently arranged with dining area and lounge seating. Window to garden, views of hilltops and castle ruins. Natural fibre flooring.

Door to shower room 6m²

Washing machine point, large walk-in shower, glass screen, WC, window to garden.

From dining room, door to rear entrance hall. Storage cupboard.

Further to large reception room 40 m²

Open fireplace, high windows to street, French windows to balcony terrace and garden beyond. Views of hilltops and castle ruins. Floor in original "tomette" terracotta tiles, painstakingly relaid. All electrics updated. Airy and light.

Rear entrance hall and French windows from the reception room lead to a spacious balcony with lounge and dining seating. A perfect barbecue spot. Restful views. Steps down to the grassed garden. Fully fenced. Gate to the small river which babbles past.

From the front entrance hall, stairs up to the first floor landing with tomette floor in need of some repair.

This is where a lot of the quirk comes in!

On the left, large bedroom 30m² with windows to street, fireplace, built-in cupboards, wooden floor that really lets you feel the age of this house.

At the end of the landing, an L-shaped room currently a large

Bedroom 25m², could lend itself to a bedroom plus