

Beautiful stone house with terrace and mountain views.



INFORMATION

Town:	Rosis
Department:	Hérault
Bed:	1
Bath:	1
Floor:	31 m2
Plot Size:	15 m2

IN BRIEF

On the edge of a beautiful hamlet, the starting point for our most beautiful hikes, you will find this charming little house with all mod cons. It offers a fully equipped kitchenette, a living room with a wood-burning stove for cosy evenings, a terrace where you can eat, relax and read, and upstairs a bedroom with sloping ceilings, a lovely shower room and toilet. This place is a haven of peace! Ideal as a second home that can be rented out during your absences for additional income, and for those who wish to live in seclusion, it is a little gem!

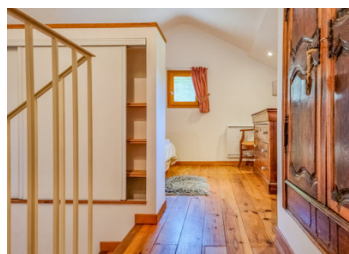


ENERGY - DPE

DPE not required.

NB. Quoted prices relate to euro transactions. Fluctuations in exchange rates are not the responsibility of the agency or those representing it. The agency and its representatives are not authorised to make or give guarantees relating to the property. These particulars do not form part of any contract but are to be taken as a general representation of the property. Any areas, measurements or distances are approximate. Text, photographs and plans, where applicable, are for guidance only. Leggett and its representatives have not tested services, equipment or facilities and cannot guarantee the same.

Particulars for off-plan purchases are intended as a guide only. Final finishes to the property may vary. Purchasers are advised to engage a solicitor to check the plans and specifications as laid out in their purchase contract with the developer.



DESCRIPTION

Equipment:

Wood-burning stove

Electric radiator

Double-glazed windows

Insulated roof

Fully equipped kitchen with small dishwasher and washing machine

Terrace with stone paving

Wooden flooring upstairs

Tiled floor on ground floor

A little love nest, a real gem!

Rosis is a 20-minute drive from the nearest town with all amenities. For nature lovers, it will be easy to observe the animals of our mountains!

Information about risks to which this property is exposed is available on the Géorisques website : <https://www.georisques.gouv.fr>

LOCAL TAXES

Taxe habitation: EUR

NOTES