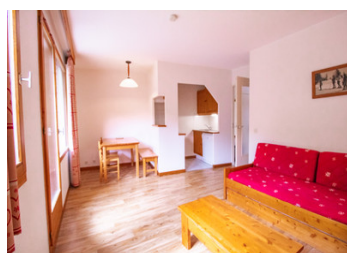
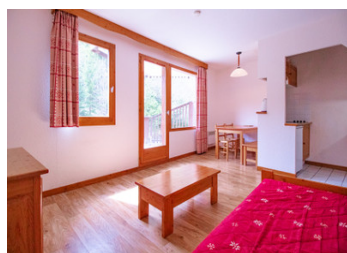
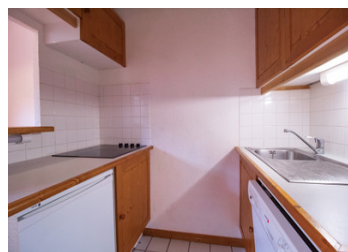
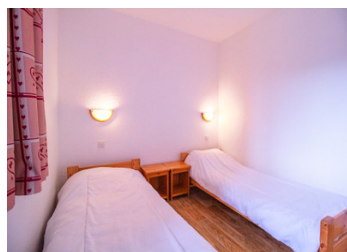


36m | bedroom apartment & parking in La Tania, Courchevel, close to the ski slopes & village centre commerces

EXCLUSIVE



INFORMATION

Town:	Courchevel
Department:	Savoie
Bed:	1
Bath:	1
Floor:	36.3 m2
Outside Space:	5 m2

IN BRIEF

This one-bedroom 36m2 apartment situated on the 1st floor of a residence in La Tania, Courchevel, enjoys beautiful forest and mountain views. Ideally located just metres from the ski slopes, it offers easy access to the entire 3 Valleys ski area — the largest interconnected ski domain in the world.

The apartment comprises:

Entrance hall with built-in cupboards and washing machine

Bathroom and separate WC

Twin bedroom

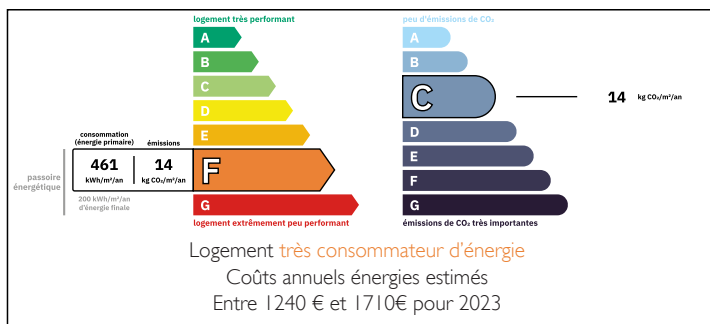
Open-plan living space with lounge, dining area, and kitchenette

Balcony

It also benefits from a private outdoor parking space and a ski locker/storage cupboard.

Set in a peaceful area of the resort, the apartment is just a short walk from the village centre, which has shops, restaurants, bars, and a ski school. La Tania is a family-friendly pedestrianised village a beginner ski

ENERGY - DPE



NB. Quoted prices relate to euro transactions. Fluctuations in exchange rates are not the responsibility of the agency or those representing it. The agency and its representatives are not authorised to make or give guarantees relating to the property. These particulars do not form part of any contract but are to be taken as a general representation of the property. Any areas, measurements or distances are approximate. Text, photographs and plans, where applicable, are for guidance only. Leggett and its representatives have not tested services, equipment or facilities and cannot guarantee the same.

Particulars for off-plan purchases are intended as a guide only. Final finishes to the property may vary. Purchasers are advised to engage a solicitor to check the plans and specifications as laid out in their purchase contract with the developer.



LOCAL TAXES

Taxe foncière: 823 EUR

Taxe habitation: EUR

NOTES

DESCRIPTION

This well-located 36m² one-bedroom apartment sits on the 1st floor of a residence in La Tania, Courchevel, and enjoys lovely views of the forest and surrounding mountains. With easy ski access and direct links into Courchevel, Meribel and the 3 valleys it's an ideal base for exploring one of the world's top alpine destinations with 600kms of prepared ski pistes.

The apartment includes:

An entrance hall with built-in cupboards and a washing machine

A bathroom and separate WC

A Twin bedroom

An open-plan living space with sitting area, dining area, and kitchenette

A balcony with beautiful forest and mountain views

It also comes with a private outdoor parking space and a secure ski locker/storage cupboard.

This apartment offers flexible usage — it can be enjoyed as a private retreat, rented out for the weeks you don't use it, or even let for the full ski season.

La Tania is a charming, pedestrian-friendly village in the Courchevel valley, known for its warm, family-friendly atmosphere. The centre is a short walk away and offers a variety of restaurants (from snack stops to Michelin-starred dining), bars, ski shops, and a ski school. The village has several ski runs leading directly into it, a dedicated beginner area with a magic carpet, and a main lift giving fast access to Courchevel and Méribel in just two lifts. In summer there is a public swimming pool, the main ski lift runs July and August and the area is perfect for walking, swimming, cycling and enjoying the beautiful area.

Courchevel itself...