

## Stunning 2 hectare lake conforming to regulations



## INFORMATION

<b>Town:</b>	<b>Meilhac</b>
<b>Department:</b>	<b>Haute-Vienne</b>
<b>Bed:</b>	<b>0</b>
<b>Bath:</b>	<b>0</b>
<b>Floor:</b>	<b>0 m2</b>
<b>Plot Size:</b>	<b>69572 m2</b>

## IN BRIEF

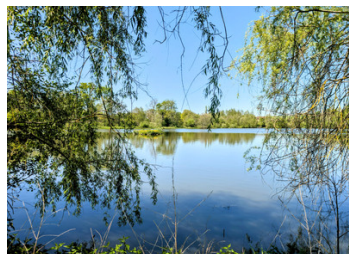
Situated in an isolated location in the Haute Vienne, 25km from the airport of Limoges.

## ENERGY - DPE

DPE not required.

NB. Quoted prices relate to euro transactions. Fluctuations in exchange rates are not the responsibility of the agency or those representing it. The agency and its representatives are not authorised to make or give guarantees relating to the property. These particulars do not form part of any contract but are to be taken as a general representation of the property. Any areas, measurements or distances are approximate. Text, photographs and plans, where applicable, are for guidance only. Leggett and its representatives have not tested services, equipment or facilities and cannot guarantee the same.

Particulars for off-plan purchases are intended as a guide only. Final finishes to the property may vary. Purchasers are advised to engage a solicitor to check the plans and specifications as laid out in their purchase contract with the developer.



## DESCRIPTION

A rare opportunity to acquire a well-maintained 2-hectare lake that complies with all regulations, with 5 hectares of easily accessible open prairie. The lake is equipped with a monk system, storm overflow, and a dedicated fish holding area. There is also a mains water connection.

-----

Information about risks to which this property is exposed is available on the Géorisques website : <https://www.georisques.gouv.fr>

## LOCAL TAXES

Taxe habitation: EUR

## NOTES