

## Beautiful Character 3 Bedroom Railway House in between Scrignac and Berrien on the Voie Verte

EXCLUSIVE



## INFORMATION

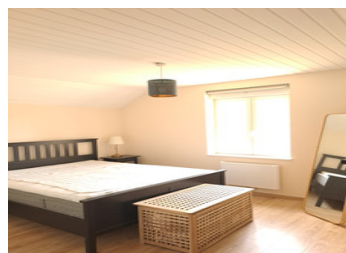
Town:	Scrignac
Department:	Finistère
Bed:	3
Bath:	1
Floor:	75 m2
Plot Size:	930 m2

## IN BRIEF

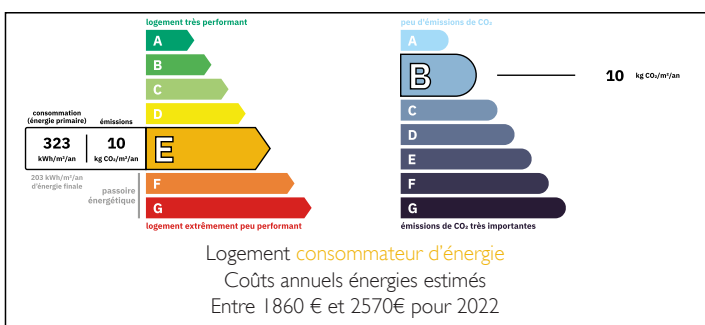
This beautifully preserved 3-bedroom former railway cottage sits on the scenic Voie Verte on the outskirts of Scrignac. Ideal for walkers and cyclists.

Blending rustic charm with modern comfort, the home features a bright living room, a recent fitted kitchen, a cosy reading nook, and a well-appointed bathroom. One bedroom is self-contained with its own toilet and utility space, ideal for guests or rental use.

Fully double glazed and full of character, the property includes a private garden and an additional plot of land—perfect for expansion, gardening, or simply enjoying the peaceful surroundings. Ideal as a permanent home, holiday retreat, or investment.

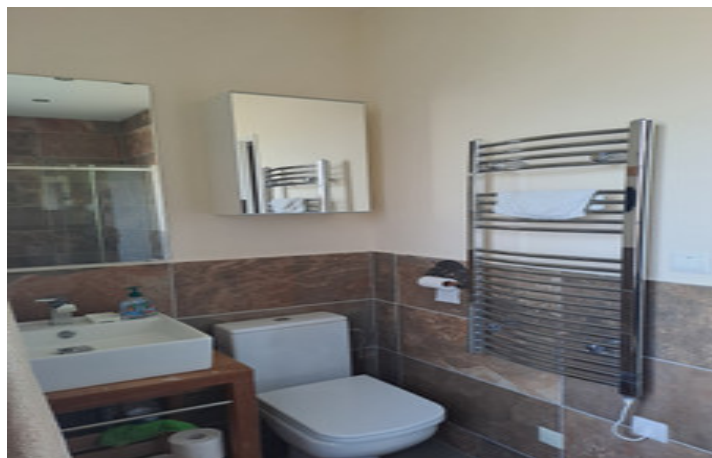


## ENERGY - DPE



NB. Quoted prices relate to euro transactions. Fluctuations in exchange rates are not the responsibility of the agency or those representing it. The agency and its representatives are not authorised to make or give guarantees relating to the property. These particulars do not form part of any contract but are to be taken as a general representation of the property. Any areas, measurements or distances are approximate. Text, photographs and plans, where applicable, are for guidance only. Leggett and its representatives have not tested services, equipment or facilities and cannot guarantee the same.

Particulars for off-plan purchases are intended as a guide only. Final finishes to the property may vary. Purchasers are advised to engage a solicitor to check the plans and specifications as laid out in their purchase contract with the developer.



## LOCAL TAXES

Taxe habitation: EUR

## NOTES

## DESCRIPTION

Right in the heart of the stunning Armorique Regional Natural Park, this delightful railway cottage is situated on the old railway line, now converted into a green pathway

The trains have given way to a world of peace and tranquility, where bicycles, walkers, horse-drawn carriages and wagons breathe new life into this historic railway. It's a place where nature lovers and those seeking freedom can truly connect with the beauty of the surroundings.

Immerse yourself in the charm of rural life while taking advantage of the convenient bus service that stops nearby. This handy link connects you to the villages of Scrignac and Berrien, where you'll find everything you need for a comfortable stay. With schools, local bars, a restaurant and a bakery, these villages have it all. And if you're looking to explore further, you're in luck!

In an amazing location just 30 minutes from Morlaix TGV station, with direct routes to Paris and Rennes, you'll find yourself in the heart of everything you could possibly need!

A mere 40 minutes from the stunning Breton coastline and sandy beaches

55 minutes from Brest International Airport, this property is perfectly positioned for exploring everything the region has to offer.

The 60-minute journey to Roscoff ferry terminal provides easy access to the UK and Ireland, making this the perfect base for your adventures.

Stepping inside, you'll be greeted by the warm, welcoming glow of a recently fitted pellet burner in the spacious, well-lit, bright living room, which is the...