

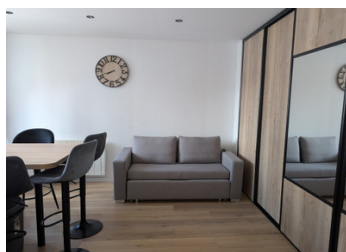
Charming, fully renovated 26m2 studio with mountain alcove, 50 meters from the the brand-new Jandri 3S lift.

EXCLUSIVE



INFORMATION

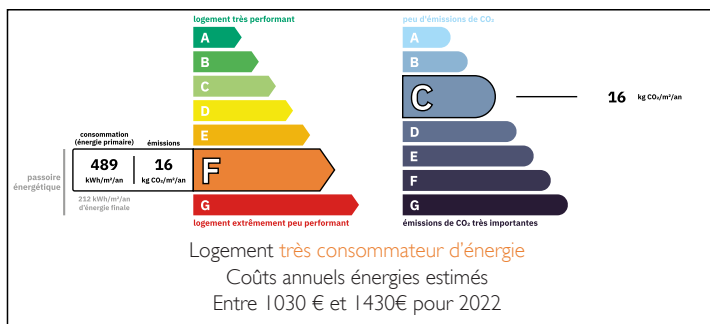
Town:	Les Deux Alpes
Department:	Isère
Bed:	0
Bath:	1
Floor:	26 m2
Plot Size:	0 m2



IN BRIEF

We are pleased to offer for sale this fully renovated 26m2 studio apartment, ideally situated in the heart of les deux alpes. Located just 50 meters from the new Jandri 3S lift, this property offers unparalleled access to the slopes and the vibrant resort atmosphere.

ENERGY - DPE



NB. Quoted prices relate to euro transactions. Fluctuations in exchange rates are not the responsibility of the agency or those representing it. The agency and its representatives are not authorised to make or give guarantees relating to the property. These particulars do not form part of any contract but are to be taken as a general representation of the property. Any areas, measurements or distances are approximate. Text, photographs and plans, where applicable, are for guidance only. Leggett and its representatives have not tested services, equipment or facilities and cannot guarantee the same.

Particulars for off-plan purchases are intended as a guide only. Final finishes to the property may vary. Purchasers are advised to engage a solicitor to check the plans and specifications as laid out in their purchase contract with the developer.

DESCRIPTION

The apartment features a well-designed layout with a separate mountain alcove, providing a cozy entry area where a double bed can be comfortably placed. This alcove is partitioned by a door, leading into the spacious living area. The modern kitchen is perfectly equipped for both daily living and après ski meals. The bathroom has been completely renovated in a very modern style and the wc is conveniently separate.

Co-owned building of 250 units
Provisional annual charges: 1100€

Information about risks to which this property is exposed is available on the Géorisques website : <https://www.georisques.gouv.fr>

LOCAL TAXES

Taxe foncière:	795 EUR
Taxe habitation:	EUR

NOTES