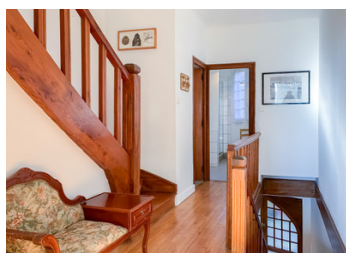
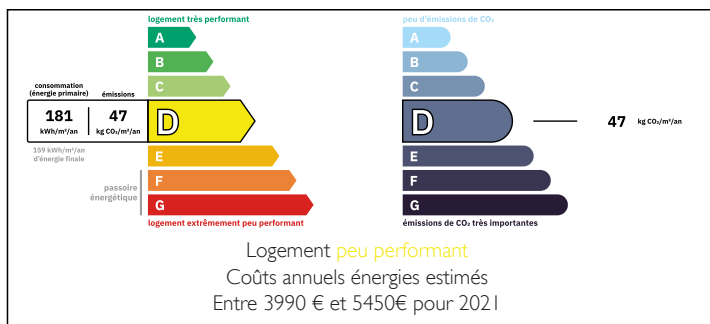


## Romantic countryside retreat with panoramic views - Terrace & Garden | Belvès – Vibrant Medieval Town

### EXCLUSIVE



### ENERGY - DPE



### INFORMATION

Town:	Belvès
Department:	Dordogne
Bed:	5
Bath:	2
Floor:	187 m2
Plot Size:	164 m2

### IN BRIEF

Looking for a warm and welcoming property in a peaceful, unspoiled setting?

In the heart of the beautiful village of Belvès, a listed medieval town recognized as one of "The Most Beautiful Villages of France", this spacious and charming village house spread over 3 levels offers an ideal setting to enjoy moments with family and friends.

Nestled in a picturesque environment, the property boasts numerous highlights:

Abundant natural light, generous ceiling heights, elegant wooden floors, sunny terrace, easy-to-maintain garden and panoramic views from every floor!

Ground Floor:

Entrance Hall

Living / Dining Room – 40m²

NB. Quoted prices relate to euro transactions. Fluctuations in exchange rates are not the responsibility of the agency or those representing it. The agency and its representatives are not authorised to make or give guarantees relating to the property. These particulars do not form part of any contract but are to be taken as a general representation of the property. Any areas, measurements or distances are approximate. Text, photographs and plans, where applicable, are for guidance only. Leggett and its representatives have not tested services, equipment or facilities and cannot guarantee the same.

Particulars for off-plan purchases are intended as a guide only. Final finishes to the property may vary. Purchasers are advised to engage a solicitor to check the plans and specifications as laid out in their purchase contract with the developer.



## LOCAL TAXES

**Taxe habitation: EUR**

## NOTES

## DESCRIPTION

The Most Périgourdin of All Périgord Villages!  
Perched on a rocky promontory overlooking the Nauze Valley, Belvès is a renowned medieval town with seven bell towers and is the gateway to one of the largest and most beautiful forests in the Dordogne region.

Located in this timeless village, officially listed as one of "The Most Beautiful Villages of France", this multi-level home is a perfect retreat in a peaceful yet picturesque setting.

This spacious and charming village house set over three floors offers the following features :

- Abundant natural light
- High ceilings
- Elegant wooden floors
- A large stone fireplace
- Sunny terrace
- Low-maintenance garden
- Panoramic views on every level!

Ground Floor layout:

- Entrance Hall – 6m<sup>2</sup>
- Living / Dining Room – 40m<sup>2</sup>
- Kitchen – 12m<sup>2</sup>
- Direct access to the terrace and easy-care garden

First Floor:

- 3 Bedrooms (11, 12,5 and 13,5 m<sup>2</sup>), each with built-in wardrobes
- Bathroom with both tub and shower
- Separate WC

Second Floor:

- 2 Bedrooms (12 and 13m<sup>2</sup>), also with built-in wardrobes
- Shower Room

Basement:

- Boiler Room and Cellar – 40m<sup>2</sup>

Accessibility: shops and restaurants, renowned