

Super renovated stone longere with large garden, numerous outbuildings and ample parking. Suitable for artisan



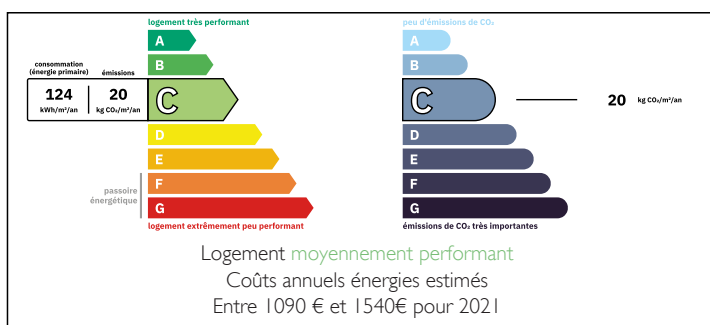
## INFORMATION

Town:	La Coulonche
Department:	Orne
Bed:	4
Bath:	1
Floor:	135 m2
Plot Size:	4132 m2

## IN BRIEF

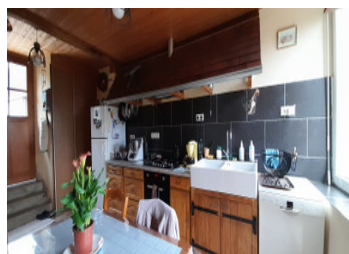
This typical longère style property with plenty of garden space, has the added benefit of a large building and parking for several vehicles, so could be interesting for someone needing workspace/storage premises.

## ENERGY - DPE



NB. Quoted prices relate to euro transactions. Fluctuations in exchange rates are not the responsibility of the agency or those representing it. The agency and its representatives are not authorised to make or give guarantees relating to the property. These particulars do not form part of any contract but are to be taken as a general representation of the property. Any areas, measurements or distances are approximate. Text, photographs and plans, where applicable, are for guidance only. Leggett and its representatives have not tested services, equipment or facilities and cannot guarantee the same.

Particulars for off-plan purchases are intended as a guide only. Final finishes to the property may vary. Purchasers are advised to engage a solicitor to check the plans and specifications as laid out in their purchase contract with the developer.



## DESCRIPTION

Set behind large gates, offering privacy, this property has ample parking and storage space. Set in a large garden the house comprises;

Spacious living/dining room with wood burner and sliding doors to the garden,.

Fitted kitchen.

Bedroom, shower room and wc.

Large walk-in pantry, with staircase to a bedroom.

Upstairs a landing leads to an office, two further bedrooms and room with wc and plumbing, ready to make a bathroom.

To the rear of the house is a terrace and BBQ area, leading to further garden areas.

A good size building has a two car garage, workshop and barn, with a large parking space in front.

-----

Information about risks to which this property is exposed is available on the Géorisques website : <https://www.georisques.gouv.fr>

## LOCAL TAXES

Taxe habitation: EUR

## NOTES