

Stunning, historic, beautifully renovated fortified house with a chateau view in Jumilhac-le-Grand.

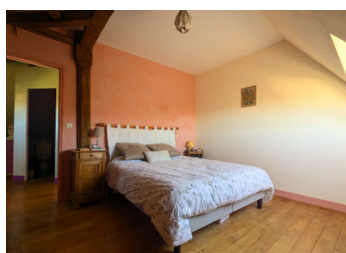


INFORMATION

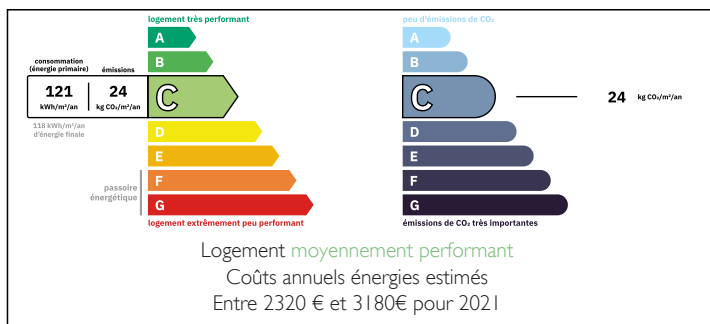
Town:	Jumilhac-le-Grand
Department:	Dordogne
Bed:	4
Bath:	2
Floor:	193.6 m2
Plot Size:	3613 m2

IN BRIEF

This stunning 4-bed home, previously a C17th fortified house, is poised in a commanding position overlooking the valley below. Sympathetically renovated to the highest standard the property retains original stone walls, a reminder of its historic past. The elegantly contrasting kitchen-diner has floor-to-ceiling glass walls giving stunning views of surrounding woodland. Though from the kitchen, a cosy lounge with a fireplace opens into a larger reception room with space for a huge dining table. At the end of this room, a strategic picture window gives an unobstructed view of the nearby Chateau de Jumilhac. The splendid first floor reception room with its arched fireplace has stunning bespoke library bookcases. A bedroom with a tall sun-drenched window leads off the library. A staircase lead up to 3 more lovely bedrooms and a bathroom. Outside, a detached double garage is...

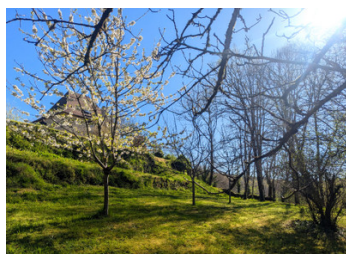


ENERGY - DPE



NB. Quoted prices relate to euro transactions. Fluctuations in exchange rates are not the responsibility of the agency or those representing it. The agency and its representatives are not authorised to make or give guarantees relating to the property. These particulars do not form part of any contract but are to be taken as a general representation of the property. Any areas, measurements or distances are approximate. Text, photographs and plans, where applicable, are for guidance only. Leggett and its representatives have not tested services, equipment or facilities and cannot guarantee the same.

Particulars for off-plan purchases are intended as a guide only. Final finishes to the property may vary. Purchasers are advised to engage a solicitor to check the plans and specifications as laid out in their purchase contract with the developer.



LOCAL TAXES

Taxe habitation: EUR

NOTES

DESCRIPTION

This stunning 4-bed home, previously a C17th fortified house, is poised in a commanding position overlooking the valley below. Sympathetically renovated to the highest standard the property retains original stone walls, a reminder of its historic past. The elegantly contrasting kitchen-diner has floor-to-ceiling glass walls giving stunning views of surrounding woodland. Though from the kitchen, a cosy lounge with a fireplace opens into a larger reception room with space for a huge dining table. At the end of this room, a strategic picture window gives an unobstructed view of the nearby Chateau de Jumilhac. The splendid first floor reception room with its arched fireplace has stunning bespoke library bookcases. A bedroom with a tall sun-drenched window leads off the library. A staircase lead up to 3 more lovely bedrooms and a bathroom. Outside, a detached double garage is surrounded by lawns and flowers up to the edge of the grassy escarpment with its stunning views.

This stunning property in Jumilhac-le-Grand benefits from double glazing throughout, gas central heating, mains drainage and a village centre location with a view of the fabulous Chateau de Jumilhac. Renovation works in this historic stone property have achieved a noteworthy energy performance rating of C. Amenities in Jumilhac-Le-Grand include a bakery, two bar-restaurants, a butcher, a convenience store, a doctor, a pharmacy, a hairdresser, and a car mechanic. Descend into the valley for beautiful river walks.

GROUND FLOOR

ENTRANCE HALL (5,4m2)

Enter the property from the garden into the...