

Detached country house with 3 bedrooms and an attached country house with 2 bedrooms and land.

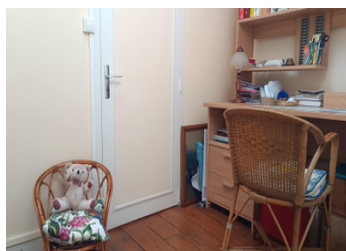
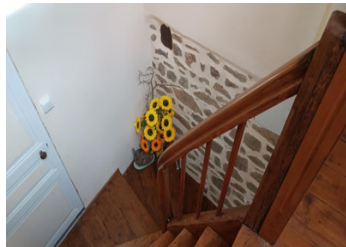


INFORMATION

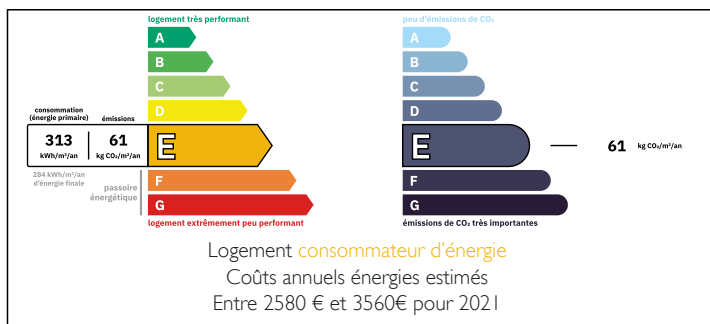
Town:	Bosmoreau-les-Mines
Department:	Creuse
Bed:	5
Bath:	3
Floor:	135 m2
Plot Size:	3000 m2

IN BRIEF

Detached country houses, the main house has an attached house and land to the rear.. Sitting on a very quiet lane in a quiet village setting.



ENERGY - DPE



NB. Quoted prices relate to euro transactions. Fluctuations in exchange rates are not the responsibility of the agency or those representing it. The agency and its representatives are not authorised to make or give guarantees relating to the property. These particulars do not form part of any contract but are to be taken as a general representation of the property. Any areas, measurements or distances are approximate. Text, photographs and plans, where applicable, are for guidance only. Leggett and its representatives have not tested services, equipment or facilities and cannot guarantee the same.

Particulars for off-plan purchases are intended as a guide only. Final finishes to the property may vary. Purchasers are advised to engage a solicitor to check the plans and specifications as laid out in their purchase contract with the developer.



DESCRIPTION

Nicely presented country 3 bedroom house with an attached 2 bedroom house. Sitting on a plot of over 3000m² with nice views and connected to mains drains.

As you enter the main house through double gates into an enclosed courtyard with parking, access to 2 stone buildings and steps up to a stone building for storage.

As you enter the main house into the kitchen/dining room with under stairs storage. There is access into the lounge which leads to the laundry room, shower room and cellar.

From the kitchen there are stairs leading up to the first bedroom and then stairs carry on up to a landing used as an office space and a further 2 bedrooms and a bathroom. More storage is here in the small loft pace.

The second house can be accessed from a main door on the lane Enter into one large room which could be lounge/kitchen/dining room there is access to a shower room from here Stairs to 2 bedrooms.

There is also a possibility of knocking through the wall on the ground floor to make the house into a large 5 bedroom property.

LOCAL TAXES

Taxe foncière: 533 EUR

Taxe habitation: EUR

NOTES

Information about risks to which this property is exposed is available on the Géorisques website : <https://www.georisques.gouv.fr>