

Charming stone village property with six bedrooms, large barn and gardens.

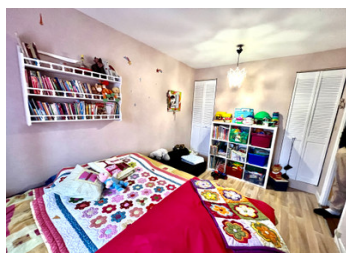


INFORMATION

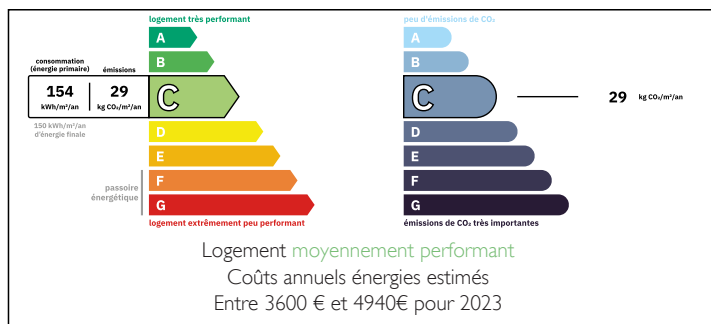
Town:	Fursac
Department:	Creuse
Bed:	6
Bath:	2
Floor:	250 m2
Plot Size:	1650 m2

IN BRIEF

This generously sized property has been well-maintained throughout, featuring central heating and double-glazed windows. It offers five bedrooms, two bathrooms, and an attic conversion currently utilized as a sewing workshop. With its expansive layout, the property presents numerous possibilities. The attached gardens provide sweeping views from the rear, while a well-preserved barn completes the property, all set in a double-gated courtyard.



ENERGY - DPE



NB. Quoted prices relate to euro transactions. Fluctuations in exchange rates are not the responsibility of the agency or those representing it. The agency and its representatives are not authorised to make or give guarantees relating to the property. These particulars do not form part of any contract but are to be taken as a general representation of the property. Any areas, measurements or distances are approximate. Text, photographs and plans, where applicable, are for guidance only. Leggett and its representatives have not tested services, equipment or facilities and cannot guarantee the same.

Particulars for off-plan purchases are intended as a guide only. Final finishes to the property may vary. Purchasers are advised to engage a solicitor to check the plans and specifications as laid out in their purchase contract with the developer.



LOCAL TAXES

Taxe foncière: 2900 EUR

Taxe habitation: EUR

NOTES

DESCRIPTION

The property is situated in a tranquil corner of a small village, with views across to the church. This detached home, along with its barn, features a front garden, a side vegetable garden, and a rear garden, all of which are beautifully landscaped with established trees and plants. The rear garden also offers expansive views of the surrounding countryside.

On the ground floor, you enter directly into an open-plan dining kitchen, complete with a wood burner fire, fitted kitchen units, built-in cupboards, and a breakfast bar. Beyond the kitchen, a spacious open-plan salon awaits, featuring a second large dining area, also with a pellet burner. The room is equipped with ample built-in storage, parquet flooring, and has access to both the side and rear gardens.

The property offers generous living space, including two additional salon rooms – one designed for watching television and another as a peaceful reading room. In this room, there are ladder steps up to a double bedroom, a quiet room away from the bustle of a family home. There is also a ground-floor bedroom, a modern fitted shower room, and a dedicated room housing the heating system.

On the first floor, you'll find three spacious double bedrooms and a family bathroom. The landing includes a walk-in closet with built-in wardrobes, as well as a separate WC.

The second floor features a converted attic, currently used as a sewing room. This room includes ample built-in storage and a large Velux window that fills the...