

## PARIS XVI - Quiet and Bright 61m<sup>2</sup> Apartment in a Beautiful Architect-Designed Building



## INFORMATION

Town:	Paris 16e Arrondissement
Department:	Paris
Bed:	2
Bath:	2
Floor:	61 m <sup>2</sup>
Plot Size:	0 m <sup>2</sup>



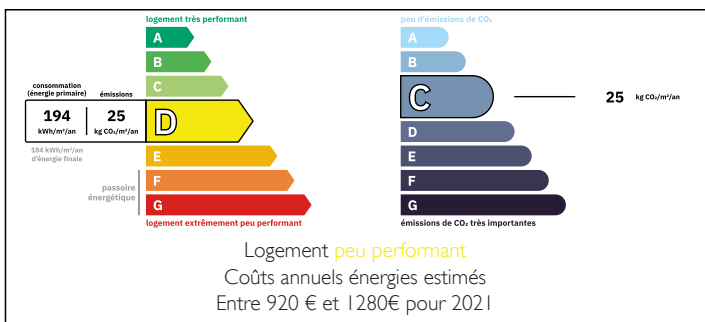
## IN BRIEF

PARIS XVI - near Maison de la Radio in a building designed by Jean Ginsberg, LEGGETT Immobilier presents this charming ground floor three-room apartment of 61 m<sup>2</sup>, bright, with east/west exposure, bathed in light and offering a peaceful environment.

This exceptional property is sold fully equipped and furnished, with elements included in the sale price. The apartment consists of an entrance followed by a comfortable hallway with practical built-in storage, a spacious living room, a recent, ergonomic and perfectly equipped kitchen. In the sleeping area, you will discover two beautiful bedrooms including a master suite with its own shower room, complemented by a second independent shower room with WC.

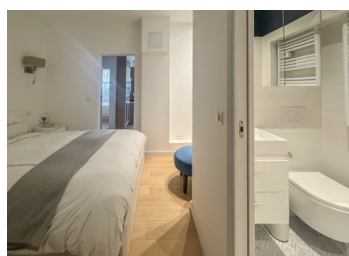
To be visited quickly

## ENERGY - DPE



NB. Quoted prices relate to euro transactions. Fluctuations in exchange rates are not the responsibility of the agency or those representing it. The agency and its representatives are not authorised to make or give guarantees relating to the property. These particulars do not form part of any contract but are to be taken as a general representation of the property. Any areas, measurements or distances are approximate. Text, photographs and plans, where applicable, are for guidance only. Leggett and its representatives have not tested services, equipment or facilities and cannot guarantee the same.

Particulars for off-plan purchases are intended as a guide only. Final finishes to the property may vary. Purchasers are advised to engage a solicitor to check the plans and specifications as laid out in their purchase contract with the developer.



## LOCAL TAXES

**Taxe foncière: 1334 EUR**

**Taxe habitation: EUR**

## DESCRIPTION

Located in the prestigious 16th arrondissement, a quintessential residential district renowned for its wide tree-lined avenues, its elegant mansions, and family-friendly atmosphere. This sought-after area offers a privileged living environment, combining bourgeois elegance with cultural dynamism, close to major green spaces such as the Bois de Boulogne and the Jardin du Ranelagh.

The Avenue de Versailles sector enjoys a strategic location along the Seine, offering beautiful walks along the riverbanks. This lively neighborhood features excellent shops, numerous quality restaurants and cafés. Particularly well-served by public transport (Mirabeau metro station, RER C), it provides quick access to central Paris while maintaining a calm and secure residential atmosphere, ideal for families and discerning professionals.

-----  
Co-owned building of 3 units  
Provisional annual charges: 5255.92€

-----  
Information about risks to which this property is exposed is available on the Géorisques website : <https://www.georisques.gouv.fr>

## NOTES