

One bedroom apartment in the 'Résidence Doris', Flaine with great views over the pistes.

EXCLUSIVE



INFORMATION

Town:	Arâches-la-Frasse
Department:	Haute-Savoie
Bed:	1
Bath:	1
Floor:	26 m2
Outside Space:	4 m2

IN BRIEF

NB, offer recently accepted.

Fantastic opportunity to own a mountain getaway or rental investment in Flaine.

Located in the sought-after Résidence Doris in Flaine Forêt, this cozy 2-room apartment offers a perfect mountain retreat just 200 metres from amenities and close to the Gérats ski lift.

With easy access to ski slopes and a free shuttle service running every 20 minutes, this is an ideal investment for ski lovers and holidaymakers.

Apartment Features:

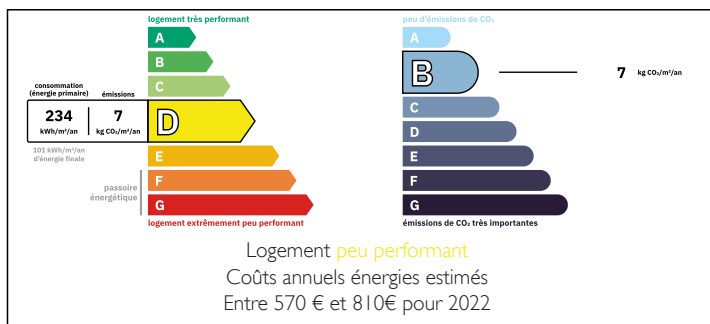
- Living Room – Cozy and bright, ideal for relaxing after a day on the slopes
- Fully equipped kitchenette
- Cabin bedroom with double bed
- “Coin montagne” ('mountain corner', ideal for

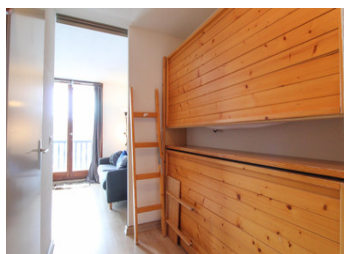
NB. Quoted prices relate to euro transactions. Fluctuations in exchange rates are not the responsibility of the agency or those representing it. The agency and its representatives are not authorised to make or give guarantees relating to the property. These particulars do not form part of any contract but are to be taken as a general representation of the property. Any areas, measurements or distances are approximate. Text, photographs and plans, where applicable, are for guidance only. Leggett and its representatives have not tested services, equipment or facilities and cannot guarantee the same.

Particulars for off-plan purchases are intended as a guide only. Final finishes to the property may vary. Purchasers are advised to engage a solicitor to check the plans and specifications as laid out in their purchase contract with the developer.



ENERGY - DPE





DESCRIPTION

The apartment is located in the ever popular and snow sure resort of Flaine.

Flaine is a modern ski resort located in the Haute-Savoie region of the French Alps, between 1,600 and 2,500 meters in altitude. It is part of the Grand Massif ski area, which includes 265 km of slopes connecting Flaine to the resorts of Les Carroz, Morillon, Samoëns, and Sixt-Fer-à-Cheval.

****Just 70 km to Geneva****

At 1600m Flaine is the highest resort in the Grand Massif ski area and boasts an excellent snow record, partly due to its situation in an enclosed bowl, making the resort popular with serious skiers and families alike.

Information about risks to which this property is exposed is available on the Géorisques website : <https://www.georisques.gouv.fr>

LOCAL TAXES

Taxe habitation: EUR

NOTES