

Bright and spacious Neo-Breton house in peaceful village surrounded by large garden and plot of land

EXCLUSIVE

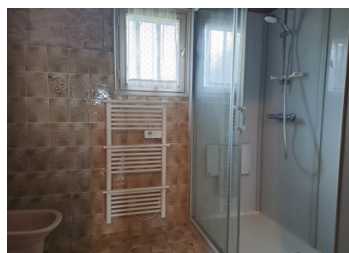


## INFORMATION

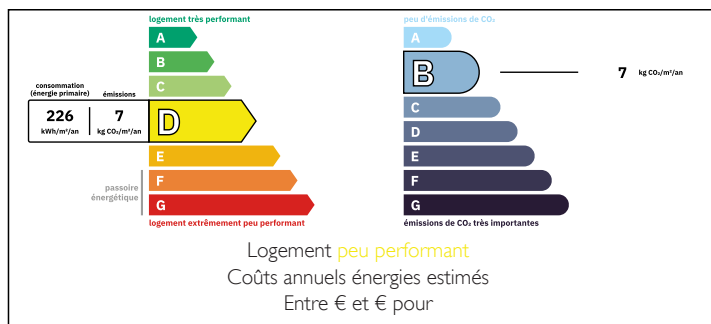
Town:	Bolazec
Department:	Finistère
Bed:	4
Bath:	2
Floor:	119 m2
Plot Size:	6864 m2

## IN BRIEF

Nestled on the edge of the peaceful village of Bolazec, this spacious detached home offers a perfect mix of rural charm and modern convenience. Just ten minutes from the picturesque town of Guerlesquin, where you'll find doctors, shops, and cafés, and only twenty-five minutes from Morlaix, it provides an ideal retreat for those seeking tranquility while staying connected to essential amenities.

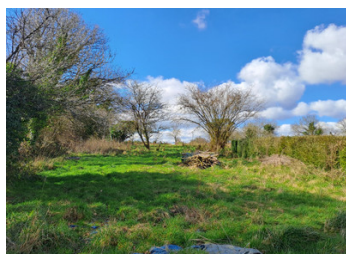


## ENERGY - DPE



NB. Quoted prices relate to euro transactions. Fluctuations in exchange rates are not the responsibility of the agency or those representing it. The agency and its representatives are not authorised to make or give guarantees relating to the property. These particulars do not form part of any contract but are to be taken as a general representation of the property. Any areas, measurements or distances are approximate. Text, photographs and plans, where applicable, are for guidance only. Leggett and its representatives have not tested services, equipment or facilities and cannot guarantee the same.

Particulars for off-plan purchases are intended as a guide only. Final finishes to the property may vary. Purchasers are advised to engage a solicitor to check the plans and specifications as laid out in their purchase contract with the developer.



## LOCAL TAXES

Taxe habitation: EUR

## NOTES

## DESCRIPTION

Stepping inside, a spacious entrance hall welcomes you, leading to a fitted kitchen with solid wooden units and a bright living and dining room featuring an inset fireplace and patio doors that let the natural light in and lead into the garden.. The ground floor also includes a comfortable double bedroom, a bathroom, and a separate WC.

Upstairs, a generous landing with storage space gives access to two large double bedrooms, an additional room that can serve as a small bedroom, office, or hobby space, another bathroom, and a separate WC.

Beneath the house, a full-length basement provides ample storage and can be accessed internally or via an electric sliding door to the side, making it an ideal garage or workshop.

Outside, the property is set within a generous 6,864m<sup>2</sup> plot, offering plenty of outdoor space for gardening enthusiasts, horse owners, or anyone looking to enjoy a peaceful rural lifestyle.

With some modernisation, this home has the potential to become a fantastic family residence or a charming countryside retreat.

-----

Information about risks to which this property is exposed is available on the Géorisques website : <https://www.georisques.gouv.fr>