

Charming Mountain chalet in pretty village just 15 minutes from Val d'Isere and Tignes

EXCLUSIVE



INFORMATION

Town:	Sainte-Foy-Tarentaise
Department:	Savoie
Bed:	3
Bath:	2
Floor:	116 m2
Plot Size:	1148 m2

IN BRIEF

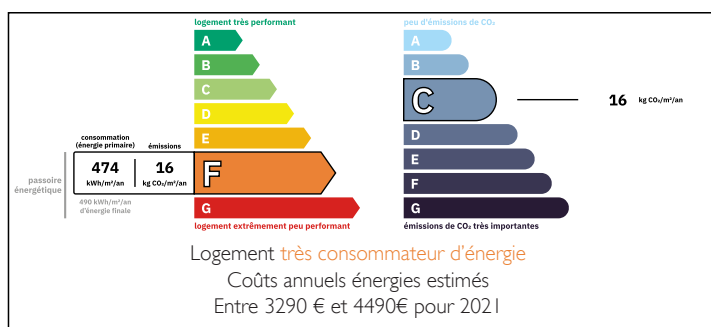
This charming mountain house sits in the tiny enclave called la Jorat which is in the commune of Saint Foy Tarentaise.

The perfect retreat with very easy access to Val d'Isere, Tignes, les Arcs Villaroger, Sainte Foy Tarentaise and la Rosiere .

This house has a master bedroom and 2 additional bedroom and comfortably sleeps 8 people. There are 2 well designed modern bathrooms .

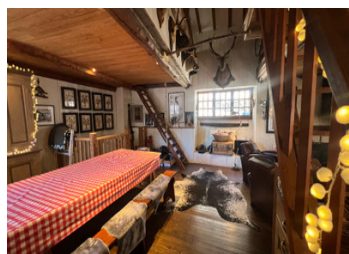


ENERGY - DPE



NB. Quoted prices relate to euro transactions. Fluctuations in exchange rates are not the responsibility of the agency or those representing it. The agency and its representatives are not authorised to make or give guarantees relating to the property. These particulars do not form part of any contract but are to be taken as a general representation of the property. Any areas, measurements or distances are approximate. Text, photographs and plans, where applicable, are for guidance only. Leggett and its representatives have not tested services, equipment or facilities and cannot guarantee the same.

Particulars for off-plan purchases are intended as a guide only. Final finishes to the property may vary. Purchasers are advised to engage a solicitor to check the plans and specifications as laid out in their purchase contract with the developer.



DESCRIPTION

The chalet is laid out as follows

The entrance level has a bedroom with double bed and an ensuite shower room.

There is also an additional shower room and WC

An entrance level with storage and. dressing area

The first floor has an open plan kitchen lounge diner with an open log fire place(which could equally have a stove) . There is a door out on the the terrace with stunning views down the valley .

The Upper area has a bedroom with a double bed and 2 singles

There is an additional bedroom area under the eaves with a double bed.

There is some parking and a shed at the top of the driveway .

LOCAL TAXES

Taxe habitation: EUR

NOTES

The Upper Tarentaise is one of the most prestigious and expansive ski regions in the French Alps, known for its world-class resorts, high-altitude terrain, and extensive lift networks. Situated in the Savoie department, this area encompasses some of the most renowned ski destinations in the world, including **Val d'Isère, Tignes, Les Arcs, La Plagne, Sainte-Foy-Tarentaise, and La Rosière**, each offering a unique character and appeal. The region benefits from excellent snowfall due to its elevation and north-facing slopes, making it a reliable choice for skiers and snowboarders throughout the winter season. The variety of terrain, from gentle beginner slopes to challenging off-piste routes, caters to all levels, while modern lift infrastructure ensures seamless connectivity between vast ski domains.

One of the defining features of the Upper Tarentaise is...