

Stone property offering, fitted kitchen, lounge, 4 bedrooms, 2 bathrooms, a hangar. Gardens of 2360 m .

EXCLUSIVE



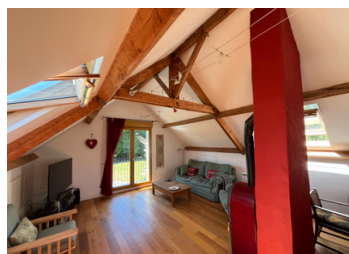
INFORMATION

Town:	Mohon
Department:	Morbihan
Bed:	4
Bath:	2
Floor:	142 m2
Plot Size:	2360 m2

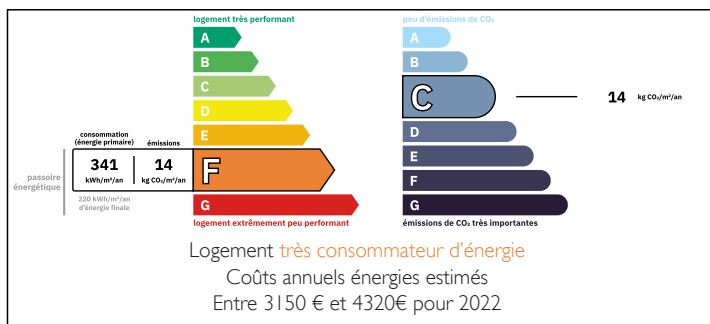
IN BRIEF

Situated in a quiet setting in Mohon, this charming house with 140 m² of living space is ideal for a family home or a second residence.

It comprises a cosy living room with fireplace, a separate kitchen, two bathrooms and four spacious bedrooms spread over two levels.



ENERGY - DPE



NB. Quoted prices relate to euro transactions. Fluctuations in exchange rates are not the responsibility of the agency or those representing it. The agency and its representatives are not authorised to make or give guarantees relating to the property. These particulars do not form part of any contract but are to be taken as a general representation of the property. Any areas, measurements or distances are approximate. Text, photographs and plans, where applicable, are for guidance only. Leggett and its representatives have not tested services, equipment or facilities and cannot guarantee the same.

Particulars for off-plan purchases are intended as a guide only. Final finishes to the property may vary. Purchasers are advised to engage a solicitor to check the plans and specifications as laid out in their purchase contract with the developer.



DESCRIPTION

The house has four bedrooms, two of which are on the ground floor.

The kitchen is spacious and opens onto a dining room with easy access to the outside terrace.

The living room is a cosy place to spend evenings by the fireplace.

The house has a bathroom on each level.

Upstairs, there are two bedrooms, a bathroom and a relaxation area with a wood-burning stove.

The property includes a large flower-filled garden of approx. 1600 m² with a shed and garage for easy storage of maintenance equipment.

Come and visit this house located between the Lanouée and Brocéliande forests, just an hour from the major towns of Brittany and the region's beaches.

Information about risks to which this property is exposed is available on the Géorisques website : <https://www.georisques.gouv.fr>

LOCAL TAXES

Taxe habitation: EUR

NOTES