

Ready-to-move-in detached house with large garden and good connections

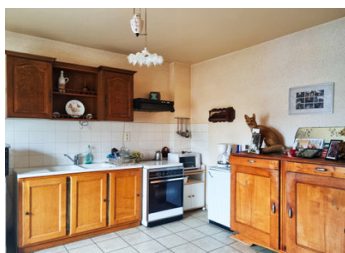


## INFORMATION

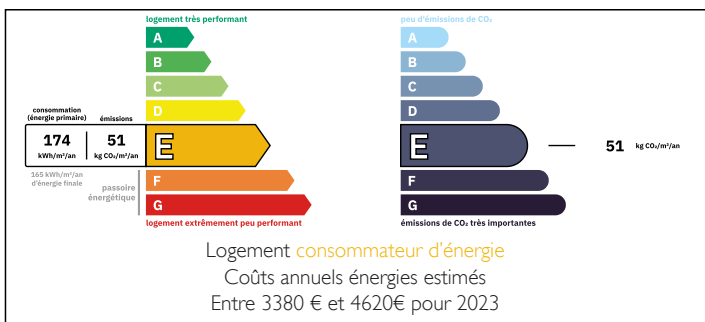
Town:	Isigny-le-Buat
Department:	Manche
Bed:	4
Bath:	2
Floor:	155 m2
Plot Size:	7380 m2

## IN BRIEF

This as-new house offers plenty of space for the whole family on two floors: 4 bright bedrooms, 2 modern bathrooms with shower, 2 separate WCs and a fully equipped kitchen. The spacious living and dining area with open fireplace invites you to enjoy cosy evenings. The house has a full basement and offers additional storage space. A spacious garden, outbuildings and several garages round off the offer. Minor renovation work offers you the opportunity to add your own touches. Thanks to the good transport links, you will live in a quiet location but be well connected.



## ENERGY - DPE



NB. Quoted prices relate to euro transactions. Fluctuations in exchange rates are not the responsibility of the agency or those representing it. The agency and its representatives are not authorised to make or give guarantees relating to the property. These particulars do not form part of any contract but are to be taken as a general representation of the property. Any areas, measurements or distances are approximate. Text, photographs and plans, where applicable, are for guidance only. Leggett and its representatives have not tested services, equipment or facilities and cannot guarantee the same.

Particulars for off-plan purchases are intended as a guide only. Final finishes to the property may vary. Purchasers are advised to engage a solicitor to check the plans and specifications as laid out in their purchase contract with the developer.



## LOCAL TAXES

Taxe habitation: EUR

## NOTES

## DESCRIPTION

Stone house with a slate roof, comprising:

On the ground floor: an entrance hall, a kitchen, a living room with fireplace, a bedroom, a bathroom with shower, a toilet and a staircase leading to the first floor and the cellar.

On the first floor: three bedrooms (one with a staircase leading to the attic), a bathroom with shower, a toilet.

- Attic

- Cellar (garage and several storage rooms) Outside: an outbuilding, a garden and another garage.

-----  
Information about risks to which this property is exposed is available on the Géorisques website : <https://www.georisques.gouv.fr>