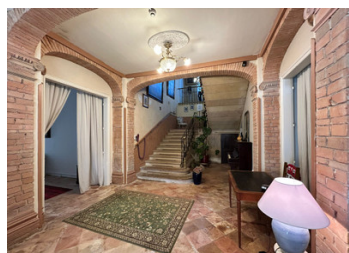


Historic Estate with Business Potential in the Golden Triangle



INFORMATION

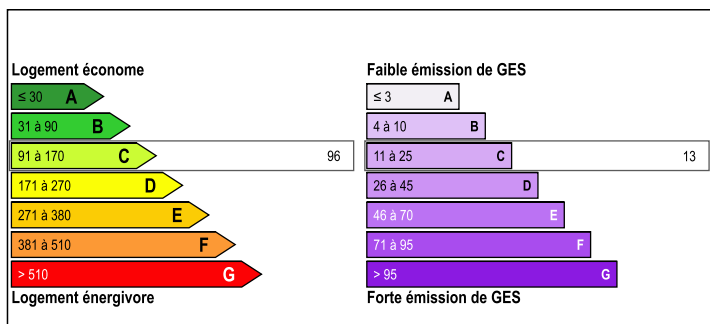
Town:	Lisle-sur-Tarn
Department:	Tarn
Bed:	12
Bath:	12
Floor:	1300 m2
Plot Size:	25000 m2



IN BRIEF

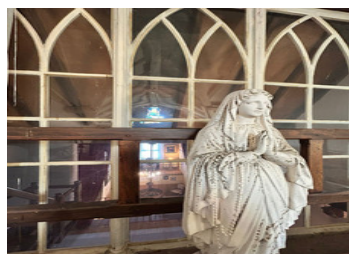
In the sought-after Golden Triangle between Albi, Gaillac and Cordes-sur-Ciel, this elegant Second Empire property offers 1,300 m² of living space within 2.5 hectares of parkland. With five grand salons and a 90 m² reception room ready for a restaurant (professional kitchen and licence IV included), it's perfect for a hospitality project. The upper floors house 12 en-suite bedrooms, ideal for a boutique hotel or guesthouse. An old wine barn has been converted into an event space, and a charming pigeonier has been transformed into a separate 2-bedroom cottage. Full of character and potential — the ideal French lifestyle property.

ENERGY - DPE



NB. Quoted prices relate to euro transactions. Fluctuations in exchange rates are not the responsibility of the agency or those representing it. The agency and its representatives are not authorised to make or give guarantees relating to the property. These particulars do not form part of any contract but are to be taken as a general representation of the property. Any areas, measurements or distances are approximate. Text, photographs and plans, where applicable, are for guidance only. Leggett and its representatives have not tested services, equipment or facilities and cannot guarantee the same.

Particulars for off-plan purchases are intended as a guide only. Final finishes to the property may vary. Purchasers are advised to engage a solicitor to check the plans and specifications as laid out in their purchase contract with the developer.



LOCAL TAXES

Taxe foncière: 1331 EUR

Taxe habitation: EUR

NOTES

DESCRIPTION

Nestled in the heart of the prestigious "Golden Triangle" between Albi, Gaillac and Cordes-sur-Ciel, this stunning Second Empire residence offers the perfect blend of heritage, space and opportunity. Set within 2.5 hectares of private parkland, the main house boasts over 1,300 m² of living space, including five elegant reception rooms on the ground floor and a 90 m² character-filled room ideal for a restaurant — complete with a professional kitchen and a licence IV already in place.

Upstairs, twelve en-suite bedrooms offer the possibility to host guests in style, whether as a boutique hotel, chambre d'hôtes, or luxury retreat. An old wine storehouse has been transformed into a beautiful reception hall, perfect for weddings or cultural events, and a fully restored pigeonier now serves as a charming two-bedroom cottage.

A dream location for anyone seeking a new life in the South of France — steeped in charm, ready to live in, and brimming with potential.

Private viewings available on request.

Information about risks to which this property is exposed is available on the Géorisques website : <https://www.georisques.gouv.fr>