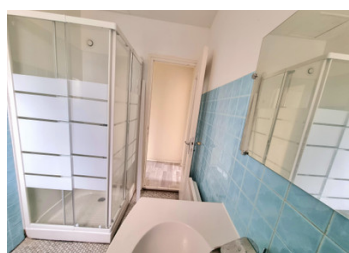
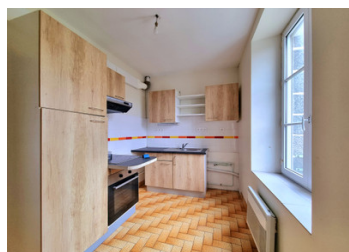


Apartment of type F2, ten minutes walk from the Tgv station of Saint-Brieuc, two hours from Paris



INFORMATION

Town:	Saint-Brieuc
Department:	Côtes-d'Armor
Bed:	1
Bath:	1
Floor:	64 m2
Plot Size:	0 m2



IN BRIEF

In the heart of Saint-Brieuc, ten minutes walk from Tgv station, two hours from Paris, ten minutes from the beach, this two-room apartment is located on the first floor of the building.

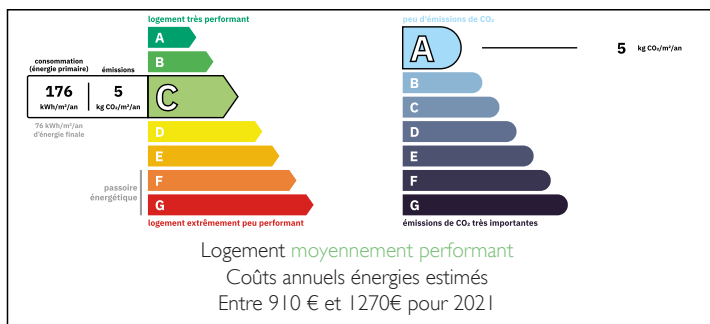
It is composed of:

- an entrance with a closet
- a kitchen,
- a lounge/stay,
- a room,
- a clearance with a closet,
- a bathroom, Wc.

Thanks to its new heat pump, the thermal comfort of this apartment is certain.

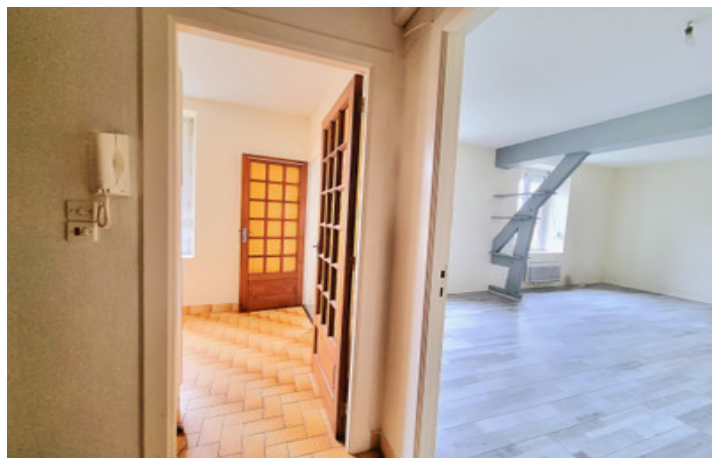
A condominium was created just recently. The charges are low. The atmosphere of the building is peaceful.

ENERGY - DPE



NB. Quoted prices relate to euro transactions. Fluctuations in exchange rates are not the responsibility of the agency or those representing it. The agency and its representatives are not authorised to make or give guarantees relating to the property. These particulars do not form part of any contract but are to be taken as a general representation of the property. Any areas, measurements or distances are approximate. Text, photographs and plans, where applicable, are for guidance only. Leggett and its representatives have not tested services, equipment or facilities and cannot guarantee the same.

Particulars for off-plan purchases are intended as a guide only. Final finishes to the property may vary. Purchasers are advised to engage a solicitor to check the plans and specifications as laid out in their purchase contract with the developer.



DESCRIPTION

In the heart of Saint-Brieuc, ten minutes walk from Tgv station, two hours from Paris, ten minutes from the beach, this two-room apartment is located on the first floor of the building.

With a surface area of approximately 64 m2, this apartment is composed of:

- an entrance with placar,
- a kitchen,
- a lounge/stay,
- a room,
- a clearance with a closet,
- a bathroom, Wc.

Thanks to its new heat pump, the thermal comfort of this apartment is certain.

A co-ownership was recently set up. The charges are low. The atmosphere of the building is peaceful.

Information about risks to which this property is exposed is available on the Géorisques website : <https://www.georisques.gouv.fr>

LOCAL TAXES

Taxe habitation: EUR

NOTES