

Established gîte complex in peaceful location. 8 bedroom longère & 4 acres of land, 15 minutes from beaches.

EXCLUSIVE



INFORMATION

Town:	Marzan
Department:	Morbihan
Bed:	8
Bath:	4
Floor:	246 m2
Plot Size:	15037 m2

IN BRIEF

PROPERTY 1

GROUND FLOOR

Sitting-dining room with open fireplace & equipped corner kitchen
Bedroom
Ensuite shower room with WC

FIRST FLOOR

Landing
Shower room with WC
Bedroom 2

PROPERTY 2

GROUND FLOOR

Sitting-dining room with open fireplace & equipped corner kitchen

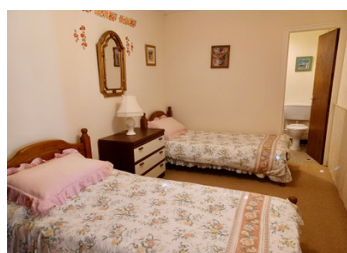
FIRST FLOOR

NB. Quoted prices relate to euro transactions. Fluctuations in exchange rates are not the responsibility of the agency or those representing it. The agency and its representatives are not authorised to make or give guarantees relating to the property. These particulars do not form part of any contract but are to be taken as a general representation of the property. Any areas, measurements or distances are approximate. Text, photographs and plans, where applicable, are for guidance only. Leggett and its representatives have not tested services, equipment or facilities and cannot guarantee the same.

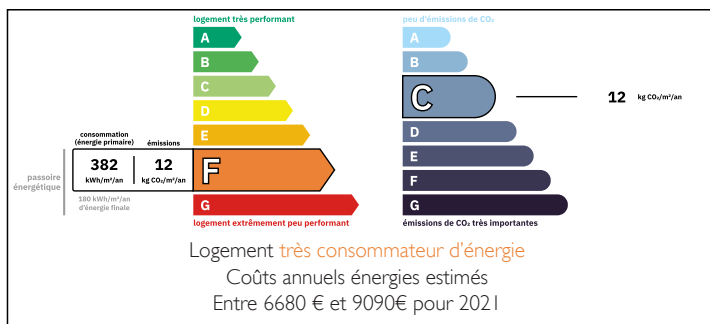
Particulars for off-plan purchases are intended as a guide only. Final finishes to the property may vary. Purchasers are advised to engage a solicitor to check the plans and specifications as laid out in their purchase contract with the developer.

GROUND FLOOR

Sitting-dining room with insert fireplace & equipped corner kitchen
Store room



ENERGY - DPE





DESCRIPTION

13 km nearest beach Pénestin or Billiers
34 km mediaeval city of Vannes & centre Redon (& TGV station)
75 km airport Nantes
95 km airport Rennes
170 km St Malo
450 km Paris

Information about risks to which this property is exposed is available on the Géorisques website : <https://www.georisques.gouv.fr>

LOCAL TAXES

Taxe foncière: 1400 EUR

Taxe habitation: EUR

NOTES