

Stunning South Facing Mountain Views, Modern 3 bedroom apartment For Sale near La Rosiere Ski Resort

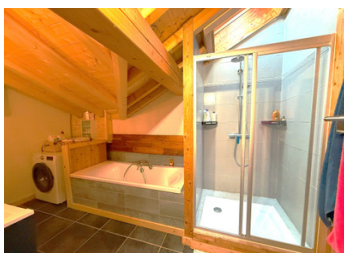


INFORMATION

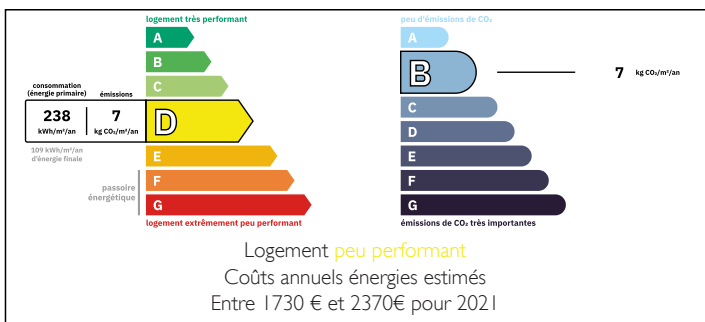
Town:	Montvalezan
Department:	Savoie
Bed:	3
Bath:	1
Floor:	95 m2
Outside Space:	5 m2

IN BRIEF

For Sale in Montvalezan, en route to La Rosiere Ski Resort, a characterful 3 bedroom apartment. Featuring wooden beams and wood look laminate floors, this property offers space both indoors and externally to make the most of its mountainside location with breath taking views across the valley.

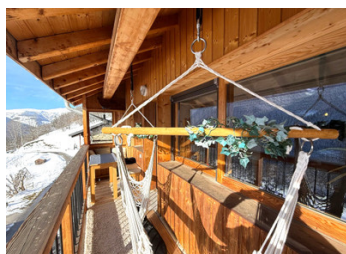
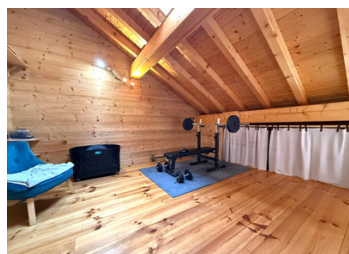


ENERGY - DPE



NB. Quoted prices relate to euro transactions. Fluctuations in exchange rates are not the responsibility of the agency or those representing it. The agency and its representatives are not authorised to make or give guarantees relating to the property. These particulars do not form part of any contract but are to be taken as a general representation of the property. Any areas, measurements or distances are approximate. Text, photographs and plans, where applicable, are for guidance only. Leggett and its representatives have not tested services, equipment or facilities and cannot guarantee the same.

Particulars for off-plan purchases are intended as a guide only. Final finishes to the property may vary. Purchasers are advised to engage a solicitor to check the plans and specifications as laid out in their purchase contract with the developer.



DESCRIPTION

Enter the apartment from the rear of the property via a new extension into the hallway and cloakroom, off which you will find bedroom one, with beautiful wooden beams, 2 wood panelled walls and an integrated shower and sink unit. This bedroom has a West facing window.

The hallway leads into the large lounge, kitchen diner with a fully equipped modern kitchen and ample storage. There is a WC off to the right and a pellet burning fire that is controlled via your phone.

The large glass patio doors draw you through the lounge area and out onto the balcony where you will be astounded by the majestic 180 degree mountain views across the valley to Les Arcs Ski Resort, up towards Val D'Isere and down the valley to the market town of Bourg Sainte Maurice (the final destination of the Ski Train from London, St Pancras).

The upper level of the apartment hosts a landing area with a velux window, currently being used as a gym and could easily be used as a home office space. There is a large family bathroom with walk in shower, double ended bath tub with shower over, wash basin in unit and a washing machine.

The second bedroom can be found after the bathroom which is currently a child's bedroom with beautiful, bespoke build bunk bed.

The master bedroom can be found at the end of the hallway, with wood beam ceiling and lovely views to...

LOCAL TAXES

Taxe foncière: 1173 EUR

Taxe habitation: EUR

NOTES