

3 bedroom chalet with 144sqm floor space, south-facing, outside space and amazing clear views



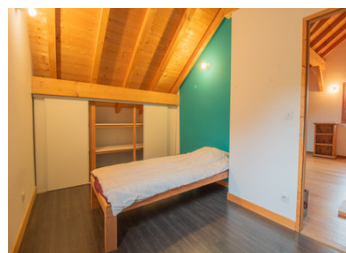
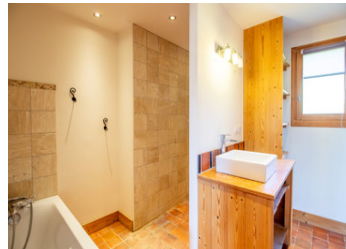
INFORMATION

Town:	Allondaz
Department:	Savoie
Bed:	4
Bath:	1
Floor:	144 m2
Plot Size:	640 m2

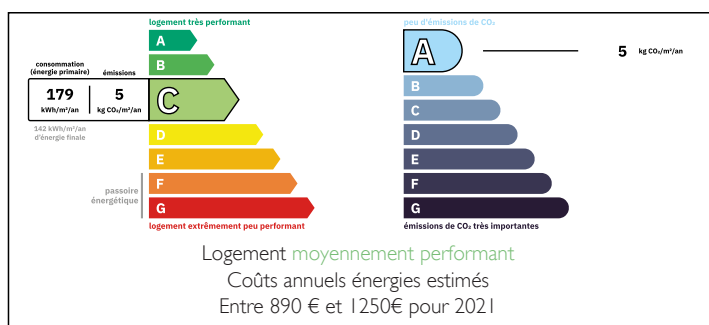
IN BRIEF

This south facing 3 bedroom chalet offers stunning panoramic views in a quiet environment. With 6 rooms, a large terrace of almost 35 sqm, a large basement/garage and a beautiful garden, the property was built using environment friendly materials.

The chalet is located only 50 km from the Three Valleys ski resort!

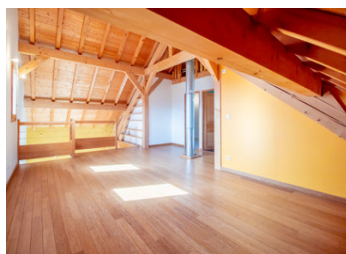
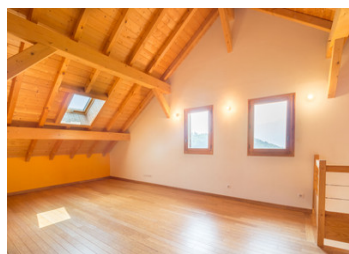


ENERGY - DPE



NB. Quoted prices relate to euro transactions. Fluctuations in exchange rates are not the responsibility of the agency or those representing it. The agency and its representatives are not authorised to make or give guarantees relating to the property. These particulars do not form part of any contract but are to be taken as a general representation of the property. Any areas, measurements or distances are approximate. Text, photographs and plans, where applicable, are for guidance only. Leggett and its representatives have not tested services, equipment or facilities and cannot guarantee the same.

Particulars for off-plan purchases are intended as a guide only. Final finishes to the property may vary. Purchasers are advised to engage a solicitor to check the plans and specifications as laid out in their purchase contract with the developer.



DESCRIPTION

Ground floor (73.3 sqm) :

Entrance hall with built in cupboards, separate toilets
Master bedroom en suite with shower and bath
Spacious living room with wood-burning stove
An open-plan kitchen, opening onto a large south-facing terrace

First floor (46.3 sqm) :

A large space suitable for conversion
Two bedrooms, one with built-in wardrobe
A WC with washbasin
A mezzanine of 8 sqm under the eaves

Basement (80 sqm) :

A garage
A wine cellar
Facilities ready for the creation of a studio apartment
A heat pump can be installed, as the entire system is already in place.

Exterior:

A garden and courtyard
A wood shed

Le Hameau d'Allondaz:

Nestled in a green and peaceful setting, the hamlet of Allondaz is a real haven of peace only 7 km from Albertville, 35 km from Les Saisies ski area and 50 km from the 3 Valleys.

Its proximity to the amenities of Albertville offers you an ideal living environment, combining tranquility with easy access to services and activities.

Don't miss this unique opportunity to live in an exceptional environment with all amenities within easy reach. Contact us today to arrange a viewing!

Information about risks to which this property is exposed is available on the Géorisques website : <https://www.georisques.gouv.fr>

LOCAL TAXES

Taxe foncière: 1424 EUR

Taxe habitation: EUR

NOTES