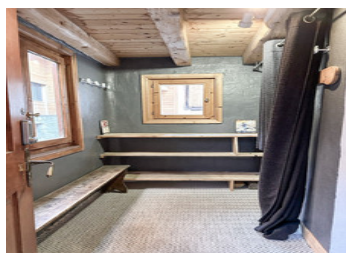
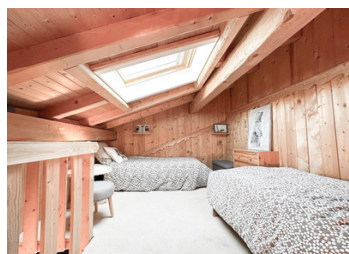


2 bedroom village house in beautiful Le Praz, Courchevel, 3 Valleys, near ski lifts, bars, restaurants



INFORMATION

Town:	Courchevel
Department:	Savoie
Bed:	2
Bath:	0
Floor:	57 m2
Plot Size:	5 m2



IN BRIEF

Charming Village Property in Le Praz, Courchevel – A Rare Find in the Heart of the 3 Valleys

This property, located in the highly sought-after village of Le Praz, Courchevel, offers a unique opportunity to own a piece of authentic alpine living. With a total area of 80m² (57m² of habitable space), the property comprises:

A spacious vaulted cellar

Entrance hall

Kitchen

Living area

2 bedrooms

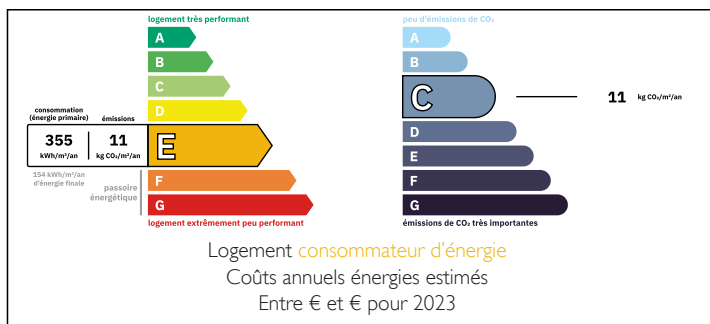
1 shower room

1 separate WC

Balcony

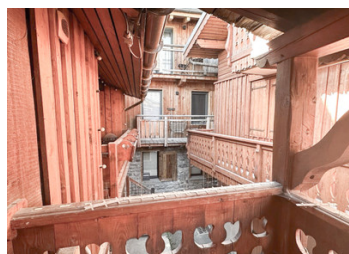
Situated just a few steps from the charming restaurants and shops of Le Praz, this property is ideally located for both winter and summer activities. Le Praz is an authentic and picturesque village, offering easy access to the ski lifts, including one that

ENERGY - DPE



NB. Quoted prices relate to euro transactions. Fluctuations in exchange rates are not the responsibility of the agency or those representing it. The agency and its representatives are not authorised to make or give guarantees relating to the property. These particulars do not form part of any contract but are to be taken as a general representation of the property. Any areas, measurements or distances are approximate. Text, photographs and plans, where applicable, are for guidance only. Leggett and its representatives have not tested services, equipment or facilities and cannot guarantee the same.

Particulars for off-plan purchases are intended as a guide only. Final finishes to the property may vary. Purchasers are advised to engage a solicitor to check the plans and specifications as laid out in their purchase contract with the developer.



DESCRIPTION

Charming Village Property in Le Praz, Courchevel – A Rare Find in the Heart of the 3 Valleys.

This delightful property, located in the highly sought-after village of Le Praz, Courchevel, offers a unique opportunity to own a piece of authentic alpine living. With a total area of 80m² (57m² of habitable space), the property comprises:

A spacious vaulted cellar

Entrance hall

Kitchen

Living area 24m²

2 bedrooms - 12 and 11m²

1 shower room

1 separate WC

Balcony 5m²

Situated just a few steps from the charming restaurants and shops of Le Praz, this property is ideally located for both winter and summer activities. Le Praz is an authentic and picturesque village with excellent connections to the surrounding areas.

In winter, the ski lifts provide direct access to Courchevel 1850, and one lift runs until 11:30 pm.

For those interested in cross-country skiing, Le Praz offers a network of trails, perfect for exploring the snowy landscape at a slower pace. Additionally, the village is home to the historic Olympic ski jumps, offering a unique piece of Olympic history.

In summer, Le Praz becomes a haven for outdoor enthusiasts with a beautiful lake ideal for swimming, as well as an abundance of mountain walking and biking trails. The village provides the perfect combination of alpine charm, recreational opportunities, and modern conveniences.

This property offers great potential for anyone seeking a traditional alpine retreat in a location that provides both winter and summer allure.

Contact us now for more information and to arrange a viewing.

Information about risks to...

LOCAL TAXES

Taxe foncière: 425 EUR

Taxe habitation: EUR

NOTES