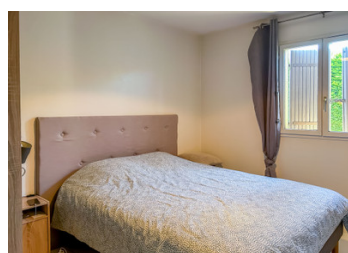


Chancelade: Single-storey house of 100 m with a garage of 27 m .



INFORMATION

Town:	Chancelade
Department:	Dordogne
Bed:	3
Bath:	1
Floor:	100 m ²
Plot Size:	1447 m ²

IN BRIEF

Located in Chancelade in Dordogne in the white Périgord

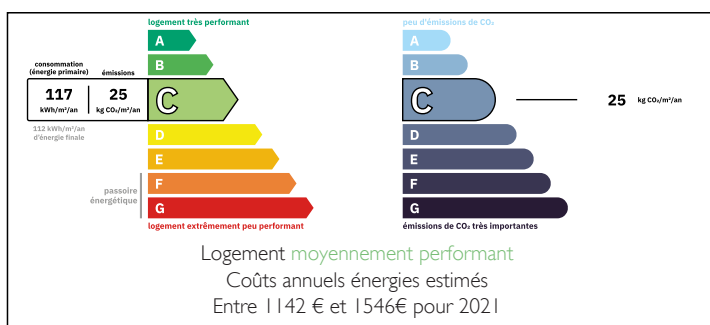
Single-storey house of 101 m² comprising :

- 1 recently fitted kitchen opening onto 1 lounge/dining room with fireplace, 3 bedrooms, 1 shower room, 1 WC and 1 attached garage.
- 1 wooden shed

The benefits of this house are :

- On one level
- Spacious living room with plenty of natural light
- Fully equipped kitchen 2019
- Garage
- Flat plot
- Mains drainage
- Close to the Marsac-sur-l'Isle shopping area

ENERGY - DPE



NB. Quoted prices relate to euro transactions. Fluctuations in exchange rates are not the responsibility of the agency or those representing it. The agency and its representatives are not authorised to make or give guarantees relating to the property. These particulars do not form part of any contract but are to be taken as a general representation of the property. Any areas, measurements or distances are approximate. Text, photographs and plans, where applicable, are for guidance only. Leggett and its representatives have not tested services, equipment or facilities and cannot guarantee the same.

Particulars for off-plan purchases are intended as a guide only. Final finishes to the property may vary. Purchasers are advised to engage a solicitor to check the plans and specifications as laid out in their purchase contract with the developer.



DESCRIPTION

Located in Chancelade in Dordogne in the white Périgord

Located by car at :

- 2 minutes from the Marsac-sur-l'Isle shopping area
- 18 minutes from Périgueux town centre
- 15 minutes from Saint-Astier
- 10 minutes from Mensignac
- 30 minutes from Ribérac

Information about risks to which this property is exposed is available on the Géorisques website : <https://www.georisques.gouv.fr>



LOCAL TAXES

Taxe foncière: 1492 EUR

Taxe habitation: EUR

NOTES