

Fabulous 5 bed Family home with Parisian Views in Le-Mesnil-Le-Roi, close to amenities/RER A 15 min La Défense



INFORMATION

Town:	Le Mesnil-le-Roi
Department:	Yvelines
Bed:	5
Bath:	3
Floor:	215 m2
Plot Size:	972 m2

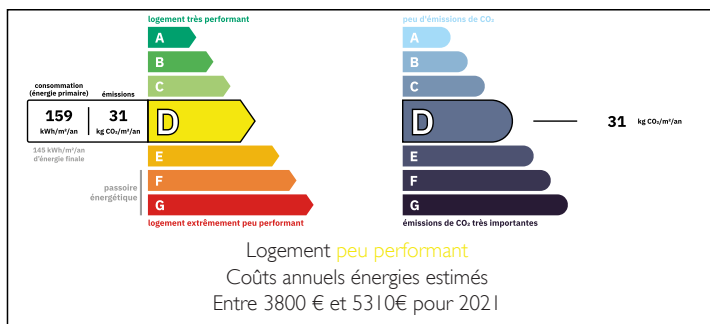
IN BRIEF

Discover this exceptional 5-bedroom family home in Le Mesnil-le-Roi, offering 215 m² of living space (344 m² Loi Carrez) with stunning views of La Défense and the Eiffel Tower. Built in 2000, this bright and spacious home features a welcoming entrance hall, a large dining kitchen with an Aga range style cooker and terrace access, a family room, and a 38 m² sitting room /dining room with a fireplace opening onto a generous outdoor terrace. The ground floor also includes a versatile bedroom/office, a shower room, and direct access to a double garage with a utility area.

Upstairs, the parental suite boasts an en-suite, dressing room, private terrace, and lift access to the kitchen, with 3 additional bedrooms, a family bathroom, and storage. A 128 m² heated basement offers endless possibilities for additional living space. Ideally located near Maisons-Laffitte...

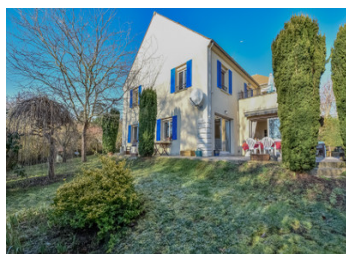


ENERGY - DPE



NB. Quoted prices relate to euro transactions. Fluctuations in exchange rates are not the responsibility of the agency or those representing it. The agency and its representatives are not authorised to make or give guarantees relating to the property. These particulars do not form part of any contract but are to be taken as a general representation of the property. Any areas, measurements or distances are approximate. Text, photographs and plans, where applicable, are for guidance only. Leggett and its representatives have not tested services, equipment or facilities and cannot guarantee the same.

Particulars for off-plan purchases are intended as a guide only. Final finishes to the property may vary. Purchasers are advised to engage a solicitor to check the plans and specifications as laid out in their purchase contract with the developer.



DESCRIPTION

Exquisite 5-Bedroom Family Home with Parisian Views – Le Mesnil-le-Roi, 78600

Set in the enchanting commune of Le Mesnil-le-Roi, this exquisite 5-bedroom family home offers an extraordinary blend of charm, elegance, and modern convenience. Built in 2000, this light-filled residence spans an impressive 215m² of living space (344m² Loi Carrez) and enjoys uninterrupted views of La Défense and the iconic Eiffel Tower from its private first-floor terrace. Perfectly designed for family living and entertaining, this home is a true sanctuary where memories are made.

Key Features

Ground Floor

Welcoming Entrance: Step through the front door into a lovely entrance hall adorned with classic black-and-white tiled flooring. Generous built-in storage ensures a clutter-free space from the moment you arrive.

Heart of the Home – The Kitchen: A warm and inviting 20m² dining kitchen featuring a traditional gas Aga style range cooker and French doors that open onto the charming garden.

Family Room: The adjoining family room, bathed in natural light from floor-to-ceiling French windows, opens onto a spacious dining terrace – the ideal spot for summer gatherings and outdoor entertaining.

Elegant Living Spaces: The 38m² dining and sitting room offers an atmosphere of refined comfort, complete with an open fireplace and French windows that frame picturesque garden views.

Versatile Ground-Floor Room: A cozy 11.45m² bedroom, currently styled as a home office, providing flexibility to adapt to your needs.

Convenience at Every Turn: A thoughtfully

LOCAL TAXES

Taxe foncière: 3696 EUR

Taxe habitation: EUR

NOTES