

Chalet-style house completely renovated



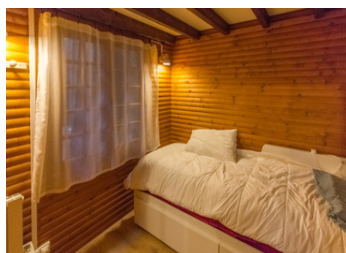
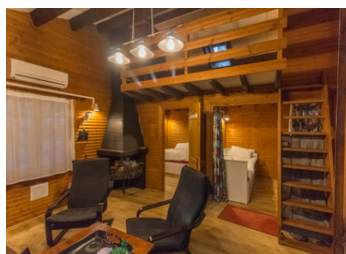
INFORMATION

Town:	Saint-Pierre-de-Bailleul
Department:	Eure
Bed:	2
Bath:	1
Floor:	51 m2
Plot Size:	1725 m2

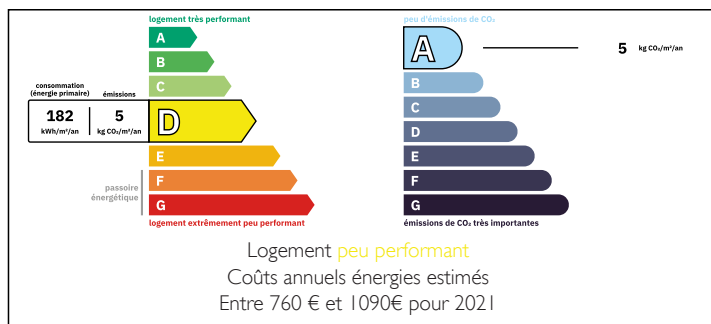
IN BRIEF

Located in a quiet area in the countryside, this chalet-style house, completely renovated, is ideal as a second home or first purchase. It offers a beautiful, cosy and functional living space, just ten minutes from all amenities.

Under certain conditions, the owner can leave the equipment and furnishings. In impeccable condition, all you have to do is put down your suitcases! No work required. The electricity, plumbing, sanitation, roof and windows were redone in 2022, with supporting invoices.



ENERGY - DPE



NB. Quoted prices relate to euro transactions. Fluctuations in exchange rates are not the responsibility of the agency or those representing it. The agency and its representatives are not authorised to make or give guarantees relating to the property. These particulars do not form part of any contract but are to be taken as a general representation of the property. Any areas, measurements or distances are approximate. Text, photographs and plans, where applicable, are for guidance only. Leggett and its representatives have not tested services, equipment or facilities and cannot guarantee the same.

Particulars for off-plan purchases are intended as a guide only. Final finishes to the property may vary. Purchasers are advised to engage a solicitor to check the plans and specifications as laid out in their purchase contract with the developer.



LOCAL TAXES

Taxe foncière:	400 EUR
Taxe habitation:	EUR

NOTES

DESCRIPTION

This charming property is located 15 minutes from Vernon and its train station leading to Paris St-Lazare, 20 minutes from Giverny, 42 minutes from Rouen, 1h00 from Paris, 1h20 from Deauville and its beaches, 1h20 from Dieppe, and Le Havre, 2h45 from Calais, and is composed of:

On the ground floor

Veranda/Dining room □ 20 m²

Kitchen □ 3 m²

Living room □ 15 m²

Bathroom □ 3 m²

Bedroom 1 □ 6 m²

Bedroom 2 □ 6 m²

Mezzanine □ 13 m²

Information about risks to which this property is exposed is available on the Géorisques website : <https://www.georisques.gouv.fr>