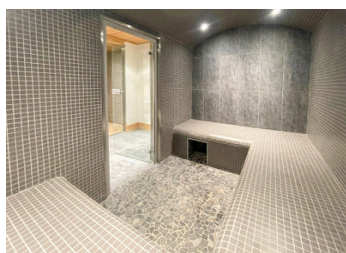


Modern, spacious ski chalet- sleeps upto 10 people. Ideally located in Le Bettex with direct ski lift to 3V

EXCLUSIVE



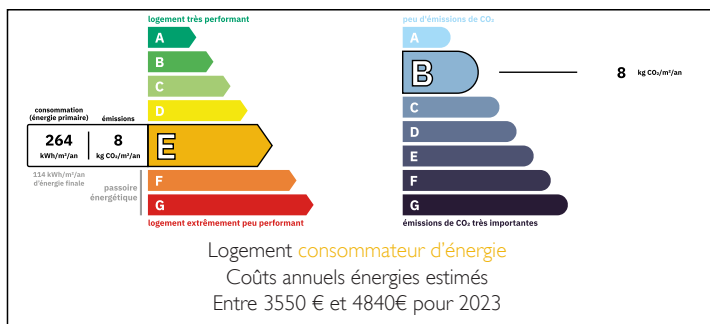
INFORMATION

Town:	Saint-Martin-de-Belleville
Department:	Savoie
Bed:	4
Bath:	3
Floor:	179 m2
Plot Size:	40 m2

IN BRIEF

Discover this elegant, modern chalet which sleeps up to 10 people built in 2012 in the charming village of Le Bettex in the very heart of the Belleville Valley – 3 Valleys. Offering 179 m² of habitable space, complemented by an additional 24 m² under the eaves bringing the floor surface area to 203 m², this modern property is bright, open and thoughtfully designed. With 3 large en-suite bedrooms with a capacity of up to 10 people (with additional sleeping alcoves), high quality amenities such as a hammam, spacious terraces, private garage, ski room and ample parking, this chalet is the ideal combination of comfort, style, and convenience all whilst being a short stroll to the ski slope and chair lift in Le Bettex.

ENERGY - DPE



NB. Quoted prices relate to euro transactions. Fluctuations in exchange rates are not the responsibility of the agency or those representing it. The agency and its representatives are not authorised to make or give guarantees relating to the property. These particulars do not form part of any contract but are to be taken as a general representation of the property. Any areas, measurements or distances are approximate. Text, photographs and plans, where applicable, are for guidance only. Leggett and its representatives have not tested services, equipment or facilities and cannot guarantee the same.

Particulars for off-plan purchases are intended as a guide only. Final finishes to the property may vary. Purchasers are advised to engage a solicitor to check the plans and specifications as laid out in their purchase contract with the developer.



LOCAL TAXES

Taxe foncière: 2883 EUR

Taxe habitation: EUR

NOTES

DESCRIPTION

Located in the picturesque hamlet of Le Bettex in the Belleville Valley, this well constructed chalet boasts contemporary architecture, sophisticated finishes, and exceptional living spaces.

Ground Floor:

- A 19.4 m² garage, ski storage, and a laundry room
- A luxurious hammam with an Italian shower for ultimate relaxation
- A welcoming entrance hall with a staircase and guest WC
- A spacious bedroom with dressing room, private bathroom with a balneotherapy bath and separate WC

First Floor:

- A sleek, fully equipped modern kitchen opening into a dining area.
- A bright and airy living room with the option to install a central fireplace
- A cosy second lounge area that doubles as a library and TV room – perfect for unwinding

Top Floor (Under Eaves):

- Two spacious bedrooms with additional sleeping areas under the eaves, both featuring their own en-suite bathroom with an Italian shower and separate WC

The property also offers two dedicated parking spaces within the property's co-ownership.

Nestled in the heart of the Belleville Valley, Le Bettex is a traditional alpine village renowned for its peaceful atmosphere and its proximity to the world-class skiing of the extensive Three Valleys ski area. Also conveniently located just a short drive from the bustling resorts of Les Menuires and Saint-Martin-de-Belleville, this charming hamlet, Le Bettex, offers a perfect balance of calm and convenience. Whether you're looking for a serene mountain retreat or an active lifestyle amidst breathtaking landscapes, Le Bettex is an ideal alpine