

Stunning manor house near medieval market town. 7 bedrooms, 4 bathrooms, over 1 hectare. and more available

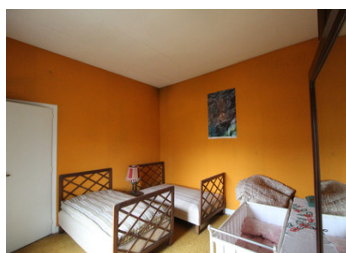
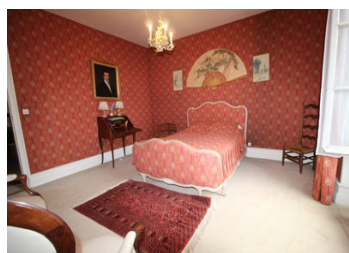


INFORMATION

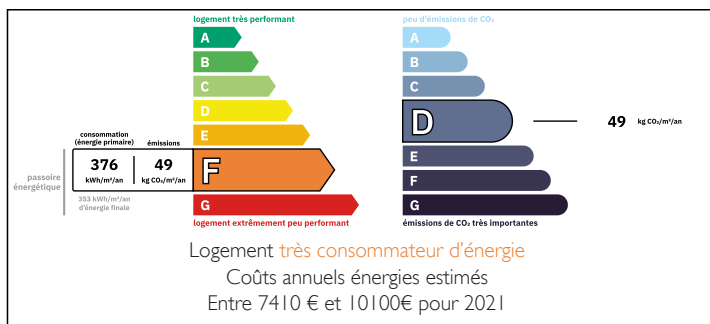
Town:	Confolens
Department:	Charente
Bed:	7
Bath:	5
Floor:	447 m2
Plot Size:	11544 m2

IN BRIEF

Outstanding 7 bedroom manor house on the edge of Confolens, with over an hectare of land, a large barn. 4 more hectares available to buy separately ! On the ground floor are an office, 2 reception rooms, large dining room and kitchen. On the lower ground level are a second kitchen opening onto the garden, a boiler room, laundry room and wine cellar. On the first floor are 3 double bedrooms, each with en-suite bathrooms. On the second floor are 4 further bedrooms. The large barn has a small 3 room house attached which is in need of renovation.



ENERGY - DPE



NB. Quoted prices relate to euro transactions. Fluctuations in exchange rates are not the responsibility of the agency or those representing it. The agency and its representatives are not authorised to make or give guarantees relating to the property. These particulars do not form part of any contract but are to be taken as a general representation of the property. Any areas, measurements or distances are approximate. Text, photographs and plans, where applicable, are for guidance only. Leggett and its representatives have not tested services, equipment or facilities and cannot guarantee the same.

Particulars for off-plan purchases are intended as a guide only. Final finishes to the property may vary. Purchasers are advised to engage a solicitor to check the plans and specifications as laid out in their purchase contract with the developer.



LOCAL TAXES

Taxe foncière: 4511 EUR

Taxe habitation: EUR

NOTES

DESCRIPTION

When you first see this magnificent property as you drive into Confolens you will be impressed. Situated in just under 12, 000m² of park land with a large barn. This will make a stunning family home with room for horses or a magnificent 'boutique' hotel. With gated entrance and secure garden the house is on 4 levels.

There are approximately an additional 4 hectares of land available to buy separately

The lower ground level opens onto the garden at one side and has a large 'summer' kitchen 35m², with laundry/utility room 10m², store room 10m², workshop 20m², wine cellar 27m² and the boiler room 11m².

The front door opens onto a lovely hallway with original tiled floor. Off the hallway is an office 11m², 2 reception rooms 27m² and 20m² and a large, panelled dining room 31m². There is a small kitchen 10m² next to the dining room with a staircase leading down to the much larger summer/second kitchen. There is also a wc on this floor.

On the first floor are 3 large bedrooms 34m², 27m² and 16m², all of which have additional en-suite bathrooms 12m², 11m² and 7m². There is also a separate wc.

On the second floor are 4 more bedrooms. The first one is 33m² with an en-suite shower room 8m². The other bedrooms are 18m², 17m² and 16m². There is also a separate wc on this floor.

In the grounds there is a large barn with 2 levels and a footprint of 150m². Attached...