

Paris 4 | Elegant Vedette Anglaise 35m | Port de l'Arsenal | Life on the water, Calm and Confort Moderne



## INFORMATION

Town:	Paris 4e Arrondissement
Department:	Paris
Bed:	2
Bath:	1
Floor:	35 m2
Plot Size:	0 m2

## IN BRIEF

Discover this 1963 Classic Motor Yacht, built by Gibbs Shipyards in London and imported to France in 1979, now moored in an exceptional setting in Paris. This 14.90 m x 3.90 m fluvial masterpiece offers 35 m<sup>2</sup> of living space, carefully renovated in 2021.

Bright 12 m<sup>2</sup> wheelhouse with panoramic view, L-shaped sofa, mini-bar and desk.

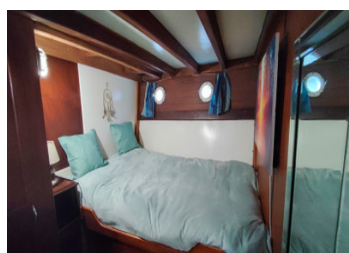
Double cabin with wardrobes and en-suite brass bathroom.

-Full beam galley with 4 work surfaces.

-Single cabin with storage and separate toilet.

-Modern equipment: reversible air conditioning, infrared radiators.

The exterior includes two terraces totalling 20 m<sup>2</sup> to enjoy the sun. Comfort is assured thanks to reversible air conditioning, infrared radiators and modern equipment.



## ENERGY - DPE

DPE not required.

NB. Quoted prices relate to euro transactions. Fluctuations in exchange rates are not the responsibility of the agency or those representing it. The agency and its representatives are not authorised to make or give guarantees relating to the property. These particulars do not form part of any contract but are to be taken as a general representation of the property. Any areas, measurements or distances are approximate. Text, photographs and plans, where applicable, are for guidance only. Leggett and its representatives have not tested services, equipment or facilities and cannot guarantee the same.

Particulars for off-plan purchases are intended as a guide only. Final finishes to the property may vary. Purchasers are advised to engage a solicitor to check the plans and specifications as laid out in their purchase contract with the developer.



## LOCAL TAXES

Taxe habitation: EUR

## NOTES

## DESCRIPTION

Living on a barge is much more than just a home; it's a unique and privileged way of life. You'll enjoy lower charges than you would in a Paris flat, while still having access to an exceptional setting. Imagine waking up every morning with a breathtaking view over the Seine, lulled by the movement of the water, and being able, if you wish, to sail freely to explore the river's enchanting landscapes, from Paris to Normandy.

The Bastille district, where the boat is moored, is an emblematic and vibrant place. With its gourmet restaurants, lively bars, renowned theatres and the Aligre market, it offers a vibrant cultural and social life. And yet, on board, the calm of the water envelops you, providing a true haven of peace.

This boat, which will be fully renovated to the highest standards in 2021, is designed for uncompromising modern comfort: reversible air conditioning/heat pump, infrared radiators and high-performance thermal insulation make it a pleasant place to live in any season. The fully-equipped kitchen, hand-crafted brass bathroom and well-appointed living spaces meet the needs of the most demanding customers.

Its robust construction, with an epoxy-coated tropical Iroko hull and mahogany-finished sipo wood interior, is a testament to its exceptional quality. The two 48 hp Lister diesel engines ensure great manoeuvrability, allowing regular escapades on the Seine or beyond.

With 20 m<sup>2</sup> of outdoor terraces, this elegant motor yacht is an ideal space for entertaining friends and family, organising summer parties or simply enjoying...