

Contemporary single-story house of 130 m on a fenced, wooded, and pool-ready 750 m plot in Le Thor.



INFORMATION

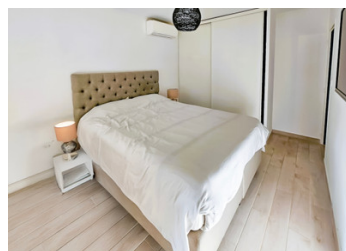
Town:	Le Thor
Department:	Vaucluse
Bed:	3
Bath:	1
Floor:	130 m2
Plot Size:	750 m2

IN BRIEF

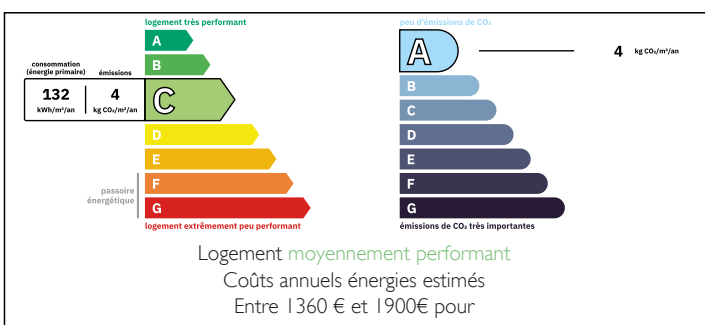
Welcome to this charming contemporary single-story home, beautifully renovated with high-quality materials, offering 130 m² of living space that perfectly combines aesthetics, comfort, and functionality.

Bathed in natural light thanks to its south-facing exposure, this home is nestled in a lush setting reminiscent of the tranquility of the countryside. It sits on a secluded, fenced, and pool-ready 750 m² plot, ensuring privacy and serenity.

A warm and impeccably maintained interior
 Spacious and bright living-dining area
 Stylish and functional semi-open kitchen
 Laundry room with space for a washing machine and dryer
 Three bedrooms, including one with a mezzanine and private entrance
 Modern bathroom with Italian-style shower

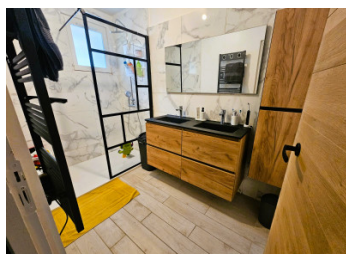


ENERGY - DPE



NB. Quoted prices relate to euro transactions. Fluctuations in exchange rates are not the responsibility of the agency or those representing it. The agency and its representatives are not authorised to make or give guarantees relating to the property. These particulars do not form part of any contract but are to be taken as a general representation of the property. Any areas, measurements or distances are approximate. Text, photographs and plans, where applicable, are for guidance only. Leggett and its representatives have not tested services, equipment or facilities and cannot guarantee the same.

Particulars for off-plan purchases are intended as a guide only. Final finishes to the property may vary. Purchasers are advised to engage a solicitor to check the plans and specifications as laid out in their purchase contract with the developer.



LOCAL TAXES

Taxe foncière: 1795 EUR
Taxe habitation: EUR

NOTES

DESCRIPTION

High-Quality Features for Optimal Comfort

Reversible air conditioning for year-round comfort
Double glazing for excellent thermal and sound insulation
Electric gate for enhanced security
Automatic irrigation system for easy garden maintenance

A Prime and Peaceful Location

Nestled in a quiet cul-de-sac, with no overlooking neighbors, this home enjoys a sought-after setting:

Just 5 minutes from the town center
Immediate proximity to the Velleron market, from L'Isle-sur-la-Sorgue and
Set in a green and preserved environment, ideal for a serene lifestyle

This move-in ready home is a true invitation to well-being, offering comfort and modernity in a highly desirable location.

A rare opportunity not to be missed!

* * *

Le Thor, a Family-Friendly Destination in the Heart of Provence

The proximity to the City of the Popes, the Luberon Park, and the Alpilles mountain range makes Le Thor an ideal destination for visitors looking to explore the entire region.

Beautiful walks can be enjoyed around Le Thor, with numerous hiking trails, making it a paradise for nature lovers.

* * *

Information about risks to which this property is exposed is available on the Géorisques website :