

A beautiful traditional mountain chalet with majestic views over the Upper Tarentaise



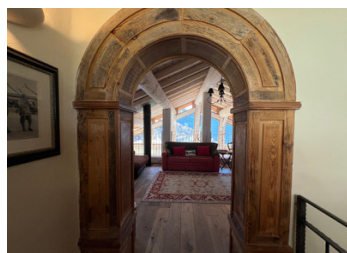
## INFORMATION

Town:	Sainte-Foy-Tarentaise
Department:	Savoie
Bed:	7
Bath:	7
Floor:	233 m2
Plot Size:	200 m2

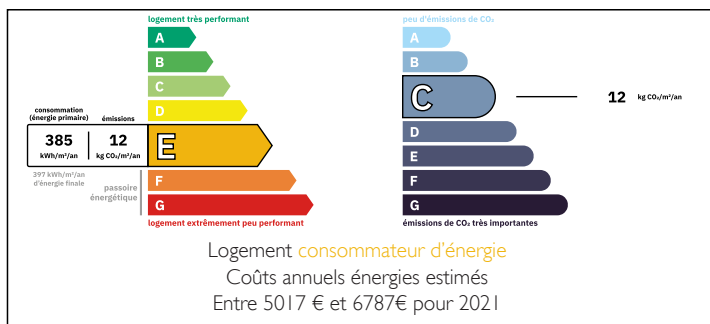
## IN BRIEF

A beautiful 5 bedroom 5 bathroom chalet southerly facing with majestic views of the Upper Tarentaise . Also comes with a 2 bedroom 2 bathroom separate apartment

The chalet is turn key ready to use and finished to a high level with natural wood and stone within easy access of 5 ski stations in under 30 minutes .



## ENERGY - DPE



NB. Quoted prices relate to euro transactions. Fluctuations in exchange rates are not the responsibility of the agency or those representing it. The agency and its representatives are not authorised to make or give guarantees relating to the property. These particulars do not form part of any contract but are to be taken as a general representation of the property. Any areas, measurements or distances are approximate. Text, photographs and plans, where applicable, are for guidance only. Leggett and its representatives have not tested services, equipment or facilities and cannot guarantee the same.

Particulars for off-plan purchases are intended as a guide only. Final finishes to the property may vary. Purchasers are advised to engage a solicitor to check the plans and specifications as laid out in their purchase contract with the developer.



## LOCAL TAXES

Taxe habitation: EUR

## NOTES

## DESCRIPTION

This chalet really does have the best of everything .

Lovely traditional village bathed in sunshine, great for year round use .

There is a lovely lawn which has the potential to have a spa or pool installed.

The entrance level boasts 4 beautiful bedrooms with ensuite facilities , one with a wrap around balcony .

The first floor a large living dining area with an extensive balcony with stunning views up to Val d'Isere , Tignes, Sainte Foy and Les Arcs .

The Upper floor has an additional bedroom and bathroom plus a reading area .

There is a large garage providing indoor parking for 2 cars, plus extra space for 4 additional cars .

There is a large double garage plus parking for 4 cars outside .

The 2 bedroom 2 bathroom apartment is currently used by the concierge , but could be used as a rental apartment or to enable the chalet to be used for larger groups .

Bedroom sizes are as follows

Bedroom 1. 8.5m<sup>2</sup> & SDB. 2.9m<sup>2</sup>

Bedroom 2. 10.2m<sup>2</sup> & SDB 2.5m<sup>2</sup>

Bedroom 3 8.9m<sup>2</sup> & SDB 3.3m<sup>2</sup>

Bedroom 4 10.9m<sup>2</sup> & SDB. 2.3m<sup>2</sup>

Bedroom 5 13.5m<sup>2</sup>. & SDB 4 m<sup>2</sup>

Bedroom 6 10.3m<sup>2</sup>. & SDB 3m<sup>2</sup>

Bedroom 7 5,6m<sup>2</sup>

Driving times to the chalet are as follows  
Geneva or Lyon , area around 2.5 -...