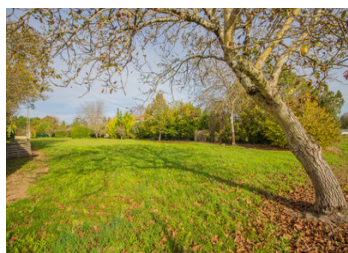
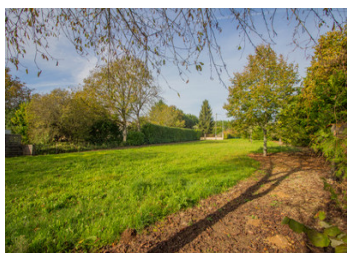
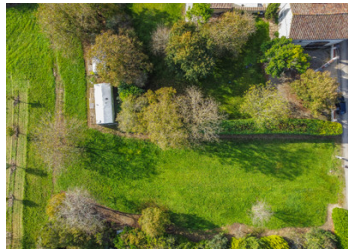


Building land with planning permission

EXCLUSIVE



ENERGY - DPE

DPE not required.

INFORMATION

Town:	Échallat
Department:	Charente
Bed:	0
Bath:	0
Floor:	0 m2
Plot Size:	2121 m2

IN BRIEF

Large building plot with planning permission, water and electricity meters on the plot. Quiet location on the edge of a hamlet, 25 minutes from Angoulême town centre.

NB. Quoted prices relate to euro transactions. Fluctuations in exchange rates are not the responsibility of the agency or those representing it. The agency and its representatives are not authorised to make or give guarantees relating to the property. These particulars do not form part of any contract but are to be taken as a general representation of the property. Any areas, measurements or distances are approximate. Text, photographs and plans, where applicable, are for guidance only. Leggett and its representatives have not tested services, equipment or facilities and cannot guarantee the same.

Particulars for off-plan purchases are intended as a guide only. Final finishes to the property may vary. Purchasers are advised to engage a solicitor to check the plans and specifications as laid out in their purchase contract with the developer.



DESCRIPTION

Planning permission, free builder

Information about risks to which this property is exposed is available on the Géorisques website : <https://www.georisques.gouv.fr>

LOCAL TAXES

Taxe habitation: EUR

NOTES