

House built in 1972 with 5 bedrooms on 162m of land of 4859m near Blois,Cellettes Ask for our 360



INFORMATION

Town:	Cellettes
Department:	Loir-et-Cher
Bed:	5
Bath:	2
Floor:	162.5 m2
Plot Size:	4859 m2



IN BRIEF

Leggett centre val de Loire offers you

Near Blois,Cellettes,Cheverny,Fougères

This pretty house built in 1972 is located in a pretty village with local shops on foot.

Surface area of the house 162m² & fenced garden with trees 4859m².

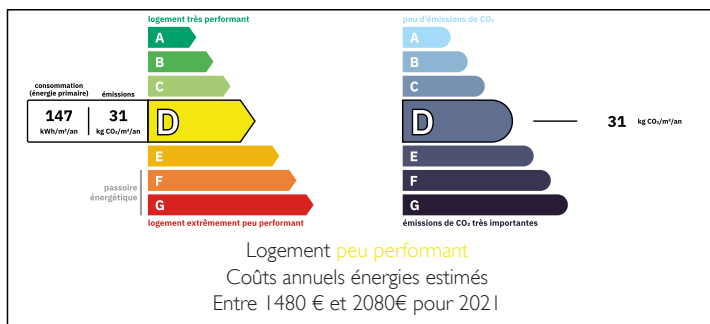
5 bedrooms, 1 living room with fireplace, detached double garage

Ask for our 360° photos & videos

Bruno Debain our commercial agent waits for you for a visit and successful information.

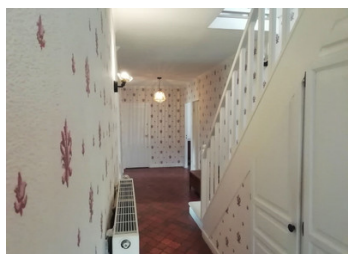
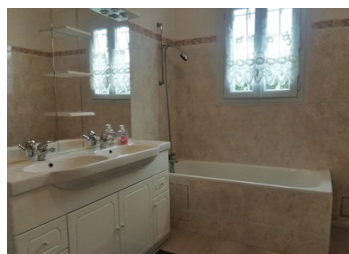
Motorway A10 & Château de Chambord 20 minutes away

ENERGY - DPE



NB. Quoted prices relate to euro transactions. Fluctuations in exchange rates are not the responsibility of the agency or those representing it. The agency and its representatives are not authorised to make or give guarantees relating to the property. These particulars do not form part of any contract but are to be taken as a general representation of the property. Any areas, measurements or distances are approximate. Text, photographs and plans, where applicable, are for guidance only. Leggett and its representatives have not tested services, equipment or facilities and cannot guarantee the same.

Particulars for off-plan purchases are intended as a guide only. Final finishes to the property may vary. Purchasers are advised to engage a solicitor to check the plans and specifications as laid out in their purchase contract with the developer.



DESCRIPTION

Leggett centre val de Loire offers you
Near Blois, Cellettes, Cheverny, Fougères
This pretty house built in 1972 is located in a pretty
village with local shops on foot.
Area of the house 162m² & fenced garden with
trees 4859m².
5 bedrooms, 1 living room with fireplace, detached
double garage
Ask for our many photos & 360° videos
Bruno Debain our commercial agent awaits you for
a successful visit and information.
A10 motorway & Chambord Castle 20 min

Information about risks to which this property is
exposed is available on the Géorisques website :
<https://www.georisques.gouv.fr>

LOCAL TAXES

Taxe foncière:	1121 EUR
Taxe habitation:	EUR

NOTES