

Six bedroom Bed & Breakfast, with two kitchens, two lounges and dining room.



INFORMATION

Town:	Lanobre
Department:	Cantal
Bed:	6
Bath:	5
Floor:	406 m2
Plot Size:	8642 m2

IN BRIEF

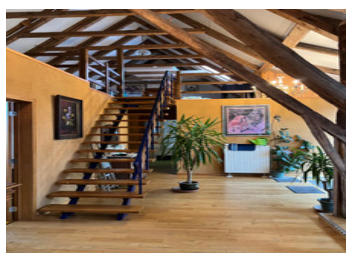
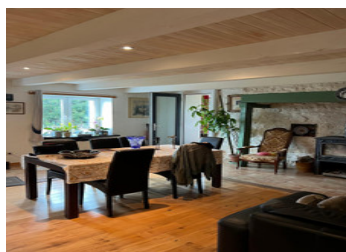
This property, currently used as a Four bedroom gite, with a separate owners accommodation is located in a small hamlet near the town of Lanobre.

The property has two main entrances. The first gives access to the owners area, with a large professional kitchen and lounge area, with grand Cantou fireplace. A large dining area is located from the kitchen, this is for the clients using the sleeping accommodation.

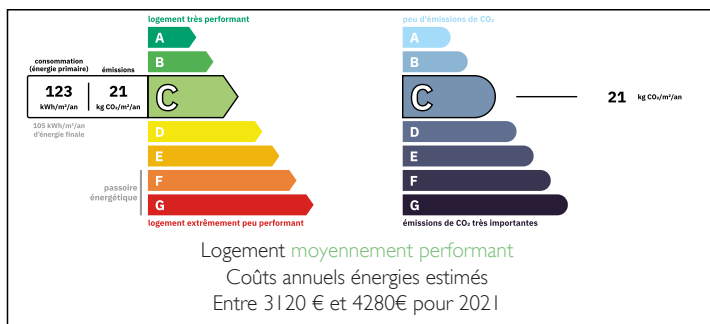
The owners two bedrooms and bathroom are also on this level, with a utility room that contains the heating system.

The guests access is to the rear of the property. This consists of a large shared open plan area, that includes lounge and small kitchen. This area has a chalet feel due to the exposed wooden beams and floors.

Four bedrooms area located on this floor, all en-suite, offering group or individual accommodation.



ENERGY - DPE



NB. Quoted prices relate to euro transactions. Fluctuations in exchange rates are not the responsibility of the agency or those representing it. The agency and its representatives are not authorised to make or give guarantees relating to the property. These particulars do not form part of any contract but are to be taken as a general representation of the property. Any areas, measurements or distances are approximate. Text, photographs and plans, where applicable, are for guidance only. Leggett and its representatives have not tested services, equipment or facilities and cannot guarantee the same.

Particulars for off-plan purchases are intended as a guide only. Final finishes to the property may vary. Purchasers are advised to engage a solicitor to check the plans and specifications as laid out in their purchase contract with the developer.



LOCAL TAXES

Taxe habitation: EUR

NOTES

DESCRIPTION

This property, currently used as a Four bedroom gite, with a separate owners accommodation is located in a small hamlet near the town of Lanobre. The property has two main entrances. The first gives access to the owners area, with a large professional kitchen and lounge area, with grand Cantou fireplace. A large dining area is located from the kitchen, this is for the clients using the sleeping accommodation.

The owners two bedrooms and bathroom are also on this level, with a utility room that contains the heating system.

The guests access is to the rear of the property. This consists of a large shared open plan area, that includes lounge and small kitchen. This area has a chalet feel due to the exposed wooden beams and floors.

Four bedrooms area located on this floor, all en-suite, offering group or individual accommodation. The large garden offers views across the countryside, allowing owners and guests to relax. There is also a ruin of an ancient house, with the possibility of obtaining planning permission, to construct another property.

Unknown to all but the French, Haute-Loire, Corrèze, Cantal and Puy-de-Dôme are hidden gems in the middle of France, with fresh mountain air and unspoilt scenery. In the mountains of the Massif Central, Cantal's volcanic landscape has created a place for adventurous year-round activities, from winter skiing to mountain hiking, cycling and climbing. Water sports include sailing, swimming, paddle-boarding and fishing in the many lakes and rivers, including the Dordogne and Loire. Cycling...