

3-bedroom house, office, bright living area, garage, wooded grounds 15mn from Angoulême, close amenities



INFORMATION

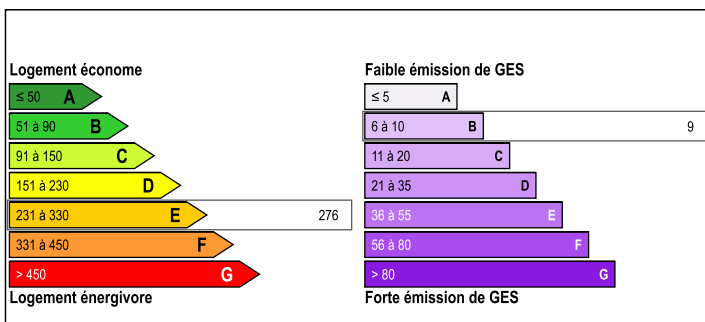
Town:	Mouthiers-sur-Boëme
Department:	Charente
Bed:	3
Bath:	2
Floor:	143 m2
Plot Size:	1713 m2

IN BRIEF

Large family home with 143m² of living space located in the lovely town of Mouthiers sur Boeme, including 3 bedrooms, one of which is on the ground floor, 2 study areas, a very bright living area, veranda, large terrace, large garage with cellar and plenty of storage space, all on a lovely 1700m² plot of land planted with trees.

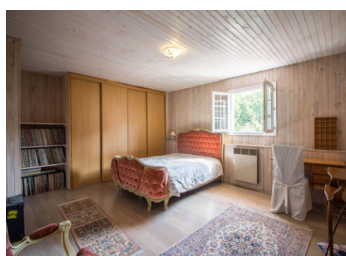
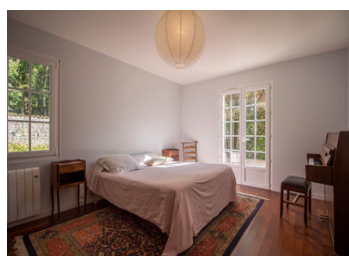


ENERGY - DPE



NB. Quoted prices relate to euro transactions. Fluctuations in exchange rates are not the responsibility of the agency or those representing it. The agency and its representatives are not authorised to make or give guarantees relating to the property. These particulars do not form part of any contract but are to be taken as a general representation of the property. Any areas, measurements or distances are approximate. Text, photographs and plans, where applicable, are for guidance only. Leggett and its representatives have not tested services, equipment or facilities and cannot guarantee the same.

Particulars for off-plan purchases are intended as a guide only. Final finishes to the property may vary. Purchasers are advised to engage a solicitor to check the plans and specifications as laid out in their purchase contract with the developer.



LOCAL TAXES

Taxe foncière: 2500 EUR

Taxe habitation: EUR

NOTES

DESCRIPTION

This pretty house offers :

On the ground floor, from the entrance hall which opens onto a large east-facing terrace

- Large bedroom (16.5m²) with double aspect
- An open-plan space/study (14.2m²) with French windows, a custom-made bookcase and a staircase leading to the first floor
- Separate WC with washbasin
- Shower room (7.8m²) with Italian shower, heated towel rail and large storage cupboard
- Very large storage cupboard in the hallway
- A lovely, light-filled 23.5m² living room with study area and French doors giving direct access to the large 60m² terrace at the front of the house. There is also a recently installed wood-burning stove.
- Continuing from the living room, you go down 2 steps to discover a very cosy lounge area (12m²).
- Directly accessible from the living room is the fitted and equipped kitchen/diner (11m²), with plenty of storage space and a 10.50m² utility room, again with plenty of storage space, a water softener, the hot water tank and the central unit for the photovoltaic panels.
- Finally, a lovely, bright 18m² conservatory with velux window, accessible from the rear of the house and opening onto the kitchen.

First floor:

- A large 18.6m² bedroom with large storage...