

4 bedroom plus 2 cabines duplex apartment for sale in Alpe d'Huez, new and ready now to enjoy this winter.



## INFORMATION

Town:	Huez
Department:	Isère
Bed:	4
Bath:	3
Floor:	103.55 m2
Outside Space:	17 m2

## IN BRIEF

This spectacular duplex apartment occupies the top floor offering fabulous mountain views. With 3 double bedrooms plus 2 additional cabine rooms you can sleep 10-12. The apartment is ready now and could be yours for the 2024-25 ski season.



## ENERGY - DPE

DPE not required.

NB. Quoted prices relate to euro transactions. Fluctuations in exchange rates are not the responsibility of the agency or those representing it. The agency and its representatives are not authorised to make or give guarantees relating to the property. These particulars do not form part of any contract but are to be taken as a general representation of the property. Any areas, measurements or distances are approximate. Text, photographs and plans, where applicable, are for guidance only. Leggett and its representatives have not tested services, equipment or facilities and cannot guarantee the same.

Particulars for off-plan purchases are intended as a guide only. Final finishes to the property may vary. Purchasers are advised to engage a solicitor to check the plans and specifications as laid out in their purchase contract with the developer.



## DESCRIPTION

### The Apartment

Entry into a hall with bathroom and an independent WC to one side. On this level there is a cosy sleeping cabine, a bedroom and the main open plan living room and kitchen and doors leading onto the terrace.

Upstairs you will find the 2nd bedroom and bathroom, a further independent WC, a bedroom with an ensuite bathroom and another sleeping cabine. The whole area feels spacious with extra room under the eaves. There is a terrace accessible from the 2 bedrooms.

### The Area:

Alpe d'Huez is a renowned ski resort and mountain pass in the French Alps, famous for its challenging 21 hairpin bends that attract cyclists from around the world. It sits at an elevation of 1,860 meters (6,102 feet) and offers stunning views, making it a popular destination year-round for outdoor enthusiasts. The climb is especially iconic in the Tour de France, where it often serves as a decisive stage in the race. In winter, Alpe d'Huez is a major skiing hub, offering extensive runs and reliable snow conditions.

### TRANSPORT/ ACCESS:

Grenoble train station - 65km

Grenoble airport - 100km

Geneva International airport - 205km

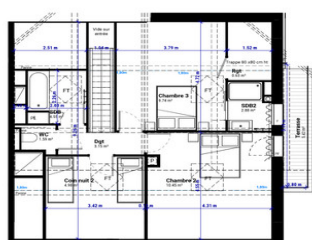
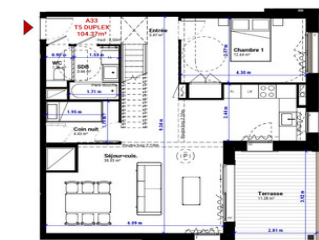
(regular buses and transfers are available)

### THE DEVELOPMENT:

Designed with generous open plan living spaces that combine quality local materials with sleek, understated lines.

Large French windows let in the beautiful natural light which, combined with warm colors, creates an atmosphere that is both cozy and intimate.

The bedrooms prioritize a peaceful...



## LOCAL TAXES

Taxe habitation: EUR

## NOTES