

REDUCTION 130,000.Stone detached property, josselin with garden. Stunning views of the château and the canal.

EXCLUSIVE



INFORMATION

Town:	Josselin
Department:	Morbihan
Bed:	2
Bath:	1
Floor:	88 m2
Plot Size:	260 m2

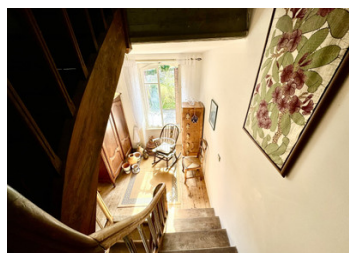
IN BRIEF

UNDER OFFER ACCEPTED | This property is all about LOCATION LOCATION LOCATION.

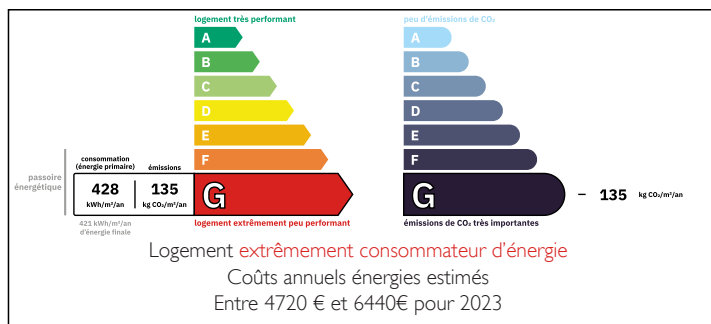
Situated in the stunning medieval town of JOSSElin with views of the medieval château and the Nantes to Brest canal.

The coast and ports are within an hour.

The property is bursting with original features,

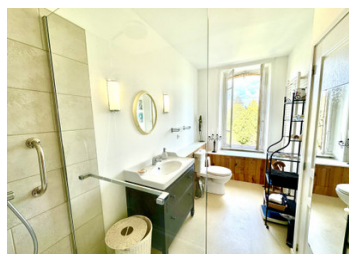


ENERGY - DPE



NB. Quoted prices relate to euro transactions. Fluctuations in exchange rates are not the responsibility of the agency or those representing it. The agency and its representatives are not authorised to make or give guarantees relating to the property. These particulars do not form part of any contract but are to be taken as a general representation of the property. Any areas, measurements or distances are approximate. Text, photographs and plans, where applicable, are for guidance only. Leggett and its representatives have not tested services, equipment or facilities and cannot guarantee the same.

Particulars for off-plan purchases are intended as a guide only. Final finishes to the property may vary. Purchasers are advised to engage a solicitor to check the plans and specifications as laid out in their purchase contract with the developer.



DESCRIPTION

Entrance to the tiled hall with original oak staircase. The ground floor has a modern fitted kitchen with appliances and a dining room with parquet floor. Patio doors lead to a raised wood Terrasse with spectacular views of the château and the canal. Completely private .

The lounge has an open fire and wood floors. The first floor showcases a hallway large enough for an office space and two large double bedrooms flooded with natural light. Original wood floors and views of the village and the château.

The bathroom is modern with walk in shower, wash basin and wc.

There is also a separate wc.

The second floor is to renovate but with a fixed staircase, the space could be easily transformed for a further two bedrooms and a bathroom if desired.

The garden is accessible directly from the outside or via steps from the raised Terrasse or from the cellar. The cellar is perfect for wood storage and garden furniture. Also access to the garden from here.

This is a perfect lock up and leave holiday home or permanent residence in the vibrant, beautiful town of JOSSELIN.

LOCAL TAXES

Taxe foncière: 1031 EUR

Taxe habitation: EUR

NOTES

Information about risks to which this property is exposed is available on the Géorisques website : <https://www.georisques.gouv.fr>