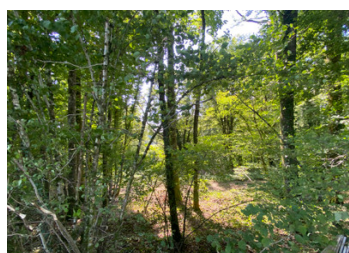
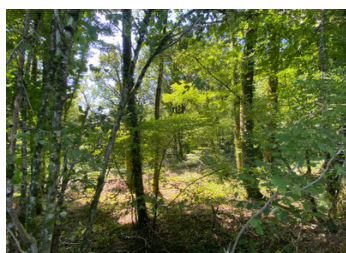
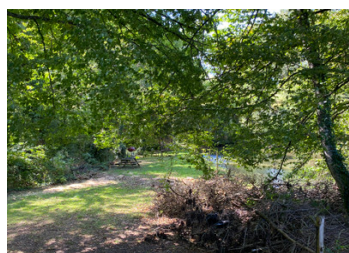
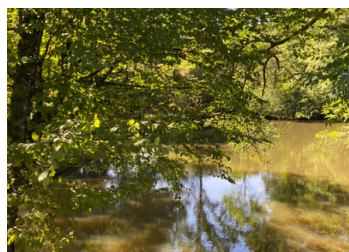


Lovely lake of $\pm 3000\text{M}^2$, a stream and a pond on 1 hectare of woodland. Be hidden from the World. Zennnnnn...

EXCLUSIVE



INFORMATION

Town:	Vigeois
Department:	Corrèze
Bed:	0
Bath:	0
Floor:	0 m ²
Plot Size:	10055 m ²

IN BRIEF

A lovely, well-maintained lake of about 3000M², which overflows in a stream, leading to a pond.

The fenced land is all woodland with mature trees: oaks, beeches and some conifers.

There is a terrace-like flat area next to the lake, ideal for BBQ, relaxing, enjoying nature. Come and visit this peaceful slice of heaven!

ENERGY - DPE

DPE not required.

NB. Quoted prices relate to euro transactions. Fluctuations in exchange rates are not the responsibility of the agency or those representing it. The agency and its representatives are not authorised to make or give guarantees relating to the property. These particulars do not form part of any contract but are to be taken as a general representation of the property. Any areas, measurements or distances are approximate. Text, photographs and plans, where applicable, are for guidance only. Leggett and its representatives have not tested services, equipment or facilities and cannot guarantee the same.

Particulars for off-plan purchases are intended as a guide only. Final finishes to the property may vary. Purchasers are advised to engage a solicitor to check the plans and specifications as laid out in their purchase contract with the developer.



DESCRIPTION

Vigeois is at about 5 minutes by car and offers a bar/restaurant, a great bakery, a butcher as well as la Poste and a lovely little market. There is a pharmacie and a train station too, which offers the connection to Uzerche and Limoges. The beautiful public lake Poncharal is a great spot to spend the day in summer.

Uzerche is at about 7 minutes, offering two larger supermarkets, a vet, a medical center, the train station, the smaller shops like florists, groceries, hair dressers etc. and a cinema even!

The nearest airports are Brive la Gaillarde at \pm 45 minutes and Limoges at \pm 45 minutes with regular flights to London Stansted&Gatwick, Liverpool, Bristol, Manchester, Bradford/Leeds and Southampton.

Information about risks to which this property is exposed is available on the Géorisques website : <https://www.georisques.gouv.fr>

LOCAL TAXES

Taxe foncière: I EUR

Taxe habitation: EUR

NOTES