

Two bedroom house in a North Dordogne hamlet with barn and almost two and half acres of land

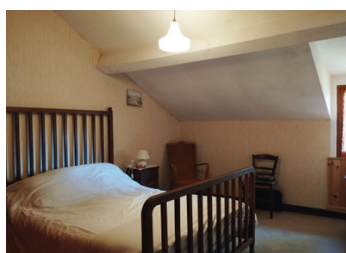
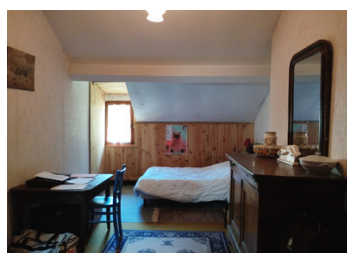


INFORMATION

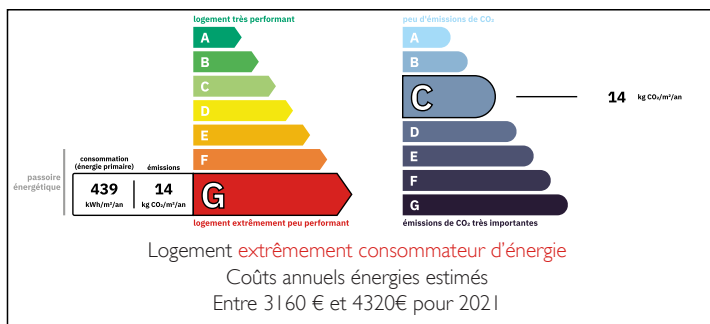
Town:	Mialet
Department:	Dordogne
Bed:	2
Bath:	1
Floor:	77.6 m2
Plot Size:	9634 m2

IN BRIEF

Situated in a hamlet 2km from the village of Mialet which has basic amenities, a bar and a leisure lake.



ENERGY - DPE



NB. Quoted prices relate to euro transactions. Fluctuations in exchange rates are not the responsibility of the agency or those representing it. The agency and its representatives are not authorised to make or give guarantees relating to the property. These particulars do not form part of any contract but are to be taken as a general representation of the property. Any areas, measurements or distances are approximate. Text, photographs and plans, where applicable, are for guidance only. Leggett and its representatives have not tested services, equipment or facilities and cannot guarantee the same.

Particulars for off-plan purchases are intended as a guide only. Final finishes to the property may vary. Purchasers are advised to engage a solicitor to check the plans and specifications as laid out in their purchase contract with the developer.



DESCRIPTION

This semi detached house has an open plan entrance, living and dining space with open fire place. A few steps takes you to the kitchen, bathroom and WC. Upstairs there are two good sized bedrooms. Attached to the house is a barn in good condition. The garden wraps around the house with a private gated entrance. The large field of around two acres is found to the left of the property. The airport of Limoges is at 50km from the property.

Information about risks to which this property is exposed is available on the Géorisques website : <https://www.georisques.gouv.fr>

LOCAL TAXES

Taxe foncière: 647 EUR

Taxe habitation: EUR

NOTES