

House and barn, three bedrooms, combined kitchen and lounge with panoramic mountain views, two bathrooms.



INFORMATION

Town:	Compains
Department:	Puy-de-Dôme
Bed:	3
Bath:	2
Floor:	95 m2
Plot Size:	5288 m2

IN BRIEF

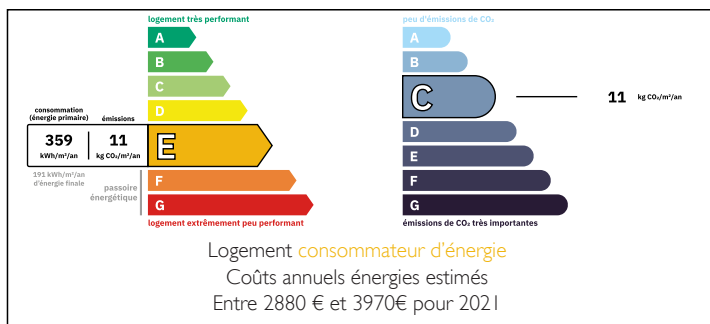
The property located close to Compains, on a quite country lane.

The property is accessed from a private driveway, with car parking at the side of the barn. The house has views across a beautiful valley, with a coffee table on a small terrace at the front door. There are two bedrooms on the ground floor and a bathroom / WC. The first bedroom (18.8sqm) has views on two sides the mountains, through double glazed windows.

The second bedroom (9.5sqm) is located along a short corridor, with wooden floors and exposed wooden beams.

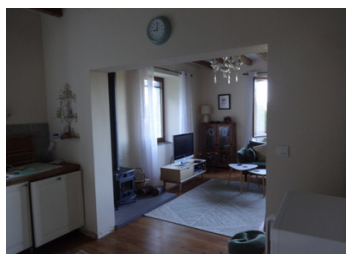
A wooden staircase leads to the first floor, a large combined kitchen and lounge is located (50.8sqm). Again with views of the mountains on two sides. Wooden floors and ceilings, a wood burning stove and electric radiators keep the house warm in the winter. The kitchen has all...

ENERGY - DPE



NB. Quoted prices relate to euro transactions. Fluctuations in exchange rates are not the responsibility of the agency or those representing it. The agency and its representatives are not authorised to make or give guarantees relating to the property. These particulars do not form part of any contract but are to be taken as a general representation of the property. Any areas, measurements or distances are approximate. Text, photographs and plans, where applicable, are for guidance only. Leggett and its representatives have not tested services, equipment or facilities and cannot guarantee the same.

Particulars for off-plan purchases are intended as a guide only. Final finishes to the property may vary. Purchasers are advised to engage a solicitor to check the plans and specifications as laid out in their purchase contract with the developer.



LOCAL TAXES

Taxe habitation: EUR

NOTES

DESCRIPTION

The property located close to Compains, on a quite country lane.

The property is accessed from a private driveway, with car parking at the side of the barn. The house has views across a beautiful valley, with a coffee table on a small terrace at the front door. There are two bedrooms on the ground floor and a bathroom / WC. The first bedroom (18.8sqm) has views on two sides the mountains, through double glazed windows.

The second bedroom (9.5sqm) is located along a short corridor, with wooden floors and exposed wooden beams.

A wooden staircase leads to the first floor, a large combined kitchen and lounge is located (50.8sqm). Again with views of the mountains on two sides. Wooden floors and ceilings, a wood burning stove and electric radiators keep the house warm in the winter. The kitchen has all built -in appliances.

The wooden staircase leads to the second floor, where the third bedroom (16.5sqm) and second bathroom is located.

A Large barn used for storage and a games room. Unknown to all but the French, Haute-Loire, Corrèze, Cantal and Puy-de-Dôme are hidden gems in the middle of France, with fresh mountain air and unspoilt scenery. In the mountains of the Massif Central, Cantal's volcanic landscape has created a place for adventurous year-round activities, from winter skiing to mountain hiking, cycling and climbing. Water sports include sailing, swimming, paddle-boarding and fishing in the many lakes and rivers, including the Dordogne and Loire. Cycling, whether on-...