

A habitable, detached two-bedroom bungalow located on a peaceful lane within a charming village

EXCLUSIVE

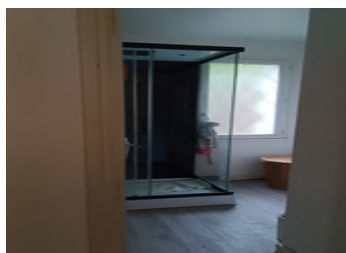
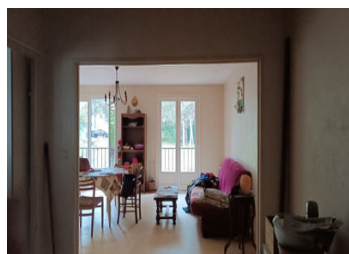


INFORMATION

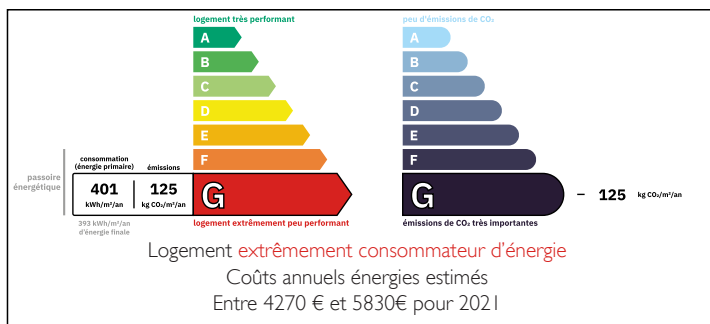
Town:	Bénévent-l'Abbaye
Department:	Creuse
Bed:	2
Bath:	1
Floor:	70 m2
Plot Size:	1900 m2

IN BRIEF

This delightful bungalow, nestled at the end of a tranquil lane and boasting off-road parking, is conveniently located within walking distance of a picturesque historical village. The village offers a full range of amenities including a supermarket, bakery, butcher, bar, restaurant, florist, hair salon, organic store, and much more.



ENERGY - DPE



NB. Quoted prices relate to euro transactions. Fluctuations in exchange rates are not the responsibility of the agency or those representing it. The agency and its representatives are not authorised to make or give guarantees relating to the property. These particulars do not form part of any contract but are to be taken as a general representation of the property. Any areas, measurements or distances are approximate. Text, photographs and plans, where applicable, are for guidance only. Leggett and its representatives have not tested services, equipment or facilities and cannot guarantee the same.

Particulars for off-plan purchases are intended as a guide only. Final finishes to the property may vary. Purchasers are advised to engage a solicitor to check the plans and specifications as laid out in their purchase contract with the developer.



DESCRIPTION

This delightful bungalow, nestled at the end of a tranquil lane and boasting off-road parking, is conveniently located within walking distance of a picturesque historical village. The village offers a full range of amenities including a supermarket, bakery, butcher, bar, restaurant, florist, hair salon, organic store, and much more.

There is to be a Fosse Septique installed within the next month or so, this will have a 10 year guarantee.

Information about risks to which this property is exposed is available on the Géorisques website : <https://www.georisques.gouv.fr>

LOCAL TAXES

Taxe habitation: EUR

NOTES