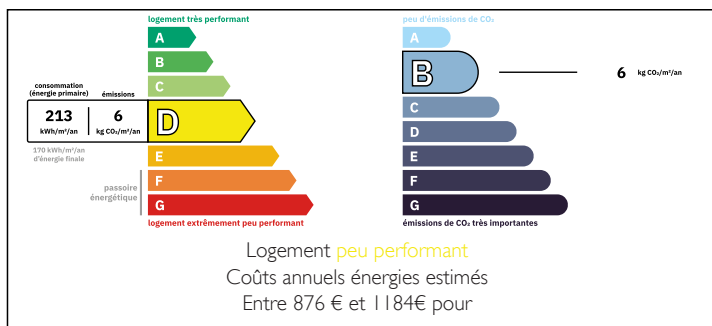


Offer accepted for this lovely village house



ENERGY - DPE



INFORMATION

Town:	Ronsenac
Department:	Charente
Bed:	3
Bath:	1
Floor:	100 m²
Plot Size:	1885 m²

IN BRIEF

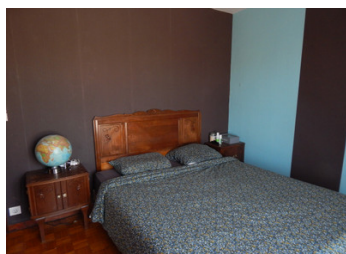
Single storey house , in good condition with an infinitive pool. raised terracing and fully fenced large garden, electric gates, garage, storage/workshop shed.

Ideal family home within commuting distance to Angouleme.

Lovely views across the hinterland and the Chateau Villebois.

NB. Quoted prices relate to euro transactions. Fluctuations in exchange rates are not the responsibility of the agency or those representing it. The agency and its representatives are not authorised to make or give guarantees relating to the property. These particulars do not form part of any contract but are to be taken as a general representation of the property. Any areas, measurements or distances are approximate. Text, photographs and plans, where applicable, are for guidance only. Leggett and its representatives have not tested services, equipment or facilities and cannot guarantee the same.

Particulars for off-plan purchases are intended as a guide only. Final finishes to the property may vary. Purchasers are advised to engage a solicitor to check the plans and specifications as laid out in their purchase contract with the developer.



DESCRIPTION

Recently constructed single storey village house.
Entrance hall/utility room.

Open plan kitchen /diner. Living room. 3 bedrooms,
WC, bathroom.

Outside terrasses , raised infinitive swimming pool
6.50 x 3.50 m.

Large fully fenced garden, planted with fruit trees,
chicken run, garage, workshop and car port.

Information about risks to which this property is
exposed is available on the Géorisques website :
<https://www.georisques.gouv.fr>

LOCAL TAXES

Taxe foncière: 500 EUR

Taxe habitation: EUR

NOTES