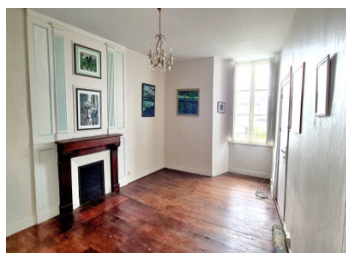
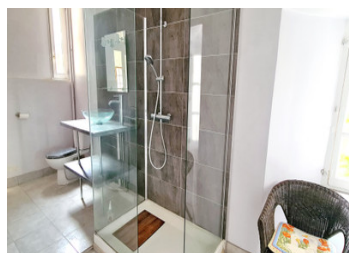


Handsome medieval property in the heart of Domfront with turret dating back to the 12th century.



## INFORMATION

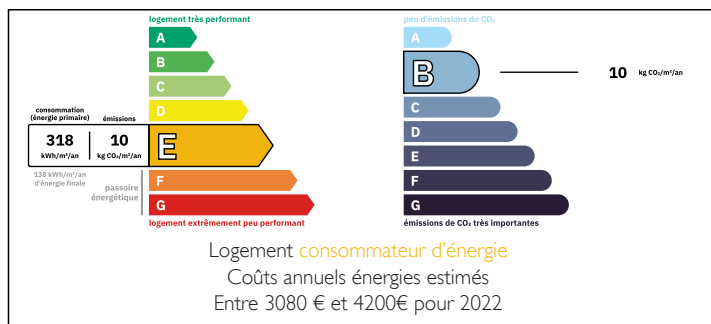
Town:	Domfront en Poiraise
Department:	Orne
Bed:	3
Bath:	3
Floor:	160 m2
Plot Size:	460 m2



## IN BRIEF

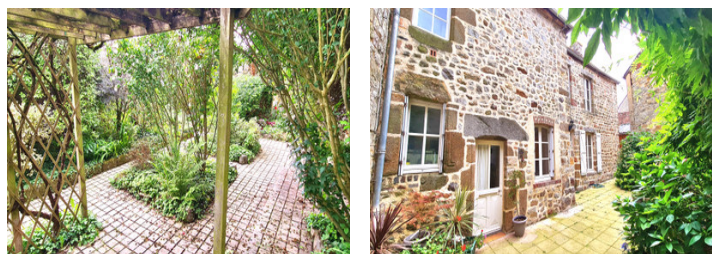
Rare find with this property full of character and history. In the old town of Domfront with access to all amenities, outside space and private parking it would work well as a family home, secondary residence and the perfect location to create a holiday rental or B&B in this pretty town steps away from its 11th century ruined chateau linked to William the Conqueror. Three bedrooms with their own bathrooms, two courtyards, private parking and steps away from bars, restaurants and the cobbled streets with shops in this historical town.

## ENERGY - DPE



NB. Quoted prices relate to euro transactions. Fluctuations in exchange rates are not the responsibility of the agency or those representing it. The agency and its representatives are not authorised to make or give guarantees relating to the property. These particulars do not form part of any contract but are to be taken as a general representation of the property. Any areas, measurements or distances are approximate. Text, photographs and plans, where applicable, are for guidance only. Leggett and its representatives have not tested services, equipment or facilities and cannot guarantee the same.

Particulars for off-plan purchases are intended as a guide only. Final finishes to the property may vary. Purchasers are advised to engage a solicitor to check the plans and specifications as laid out in their purchase contract with the developer.



## LOCAL TAXES

Taxe habitation: EUR

## NOTES

## DESCRIPTION

You enter into a hallway that leads into the kitchen/diner 25.7m<sup>2</sup>. Hand made solid wood units, tommette flooring, very old oak storage cupboard, dining area and access to the back terrace and front garden. The main living room (27m<sup>2</sup>) is light and spacious. Oak flooring, panelled walls along with central fireplace and duel aspect windows. If you ever dreamed about a bedroom in a medieval turret this ground floor bedroom (13m<sup>2</sup>) offers just that. This floor also offers a shower room with WC (2.9m<sup>2</sup>). Ideal space for an airbnb or holiday let as an option. The original oak staircase leads you to a landing where you will find a large bedroom (20m<sup>2</sup>). Wide oak floorboards, old fitted cupboard and central fireplace. This comes with a good size shower room with wc (8.2m<sup>2</sup>) and a dressing room (8.1m<sup>2</sup>) that could also work as an office. Similar to the ground floor there is a second living room (19.3m<sup>2</sup>) again with beautiful original oak flooring, fireplace and far ranging views. Off this is another bedroom in the turret (16.4m<sup>2</sup>) again with original flooring and panelled walls. A shower room with WC (7.4m<sup>2</sup>) complete this floor. Carrying up the oak staircase you are led to the attic that is ideal for storage. The property comes with a large cellar that has a concrete floor and has been insulted. Now to the exterior. On one side of the property you will find stairs leading to a courtyard garden filled with...