

Secret hideaway log cabin with lake, idyllic woodland setting offering peace and tranquillity.

EXCLUSIVE

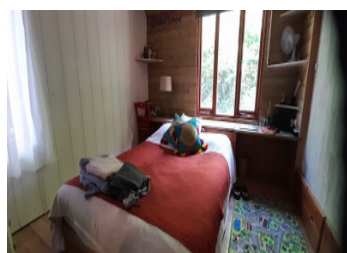


INFORMATION

Town:	La Lande-de-Goulte
Department:	Orne
Bed:	2
Bath:	1
Floor:	43 m2
Plot Size:	5813 m2

IN BRIEF

A treasure like this is rarely available, hidden away in a fairy tale woodland glade, it is perfect for those seeking a quiet isolated retreat with lake. Lovely, cosy one bedroom log cabin and outbuilding suitable for a variety of uses.



ENERGY - DPE

DPE not required.

NB. Quoted prices relate to euro transactions. Fluctuations in exchange rates are not the responsibility of the agency or those representing it. The agency and its representatives are not authorised to make or give guarantees relating to the property. These particulars do not form part of any contract but are to be taken as a general representation of the property. Any areas, measurements or distances are approximate. Text, photographs and plans, where applicable, are for guidance only. Leggett and its representatives have not tested services, equipment or facilities and cannot guarantee the same.

Particulars for off-plan purchases are intended as a guide only. Final finishes to the property may vary. Purchasers are advised to engage a solicitor to check the plans and specifications as laid out in their purchase contract with the developer.



DESCRIPTION

Accessed via gates and along grassed driveway, bordered with ornamental shrubs, hydrangea and rhododendrons.

Property comprises,

Log cabin;

Large open plan living/dining/kitchen with feature wood burner, kitchen with fitted units and Esse electric stove.

Bedroom with fitted cupboards.

Bathroom with shower, basin and wc.

Outside there is a large decked area overlooking the lake to one side and to the other, there is a large wooden building comprising garage area, studio and workshop, suitable for a variety of uses.

The lake extends to just over 2000m² and the total of the plot is 5800m²

Information about risks to which this property is exposed is available on the Géorisques website : <https://www.georisques.gouv.fr>

LOCAL TAXES

Taxe foncière: 279 EUR

Taxe habitation: EUR

NOTES