

Bungalow with garage/basement and garden, calm spot close to Lanouaille.



INFORMATION

Town:	Lanouaille
Department:	Dordogne
Bed:	3
Bath:	1
Floor:	105 m2
Plot Size:	1000 m2



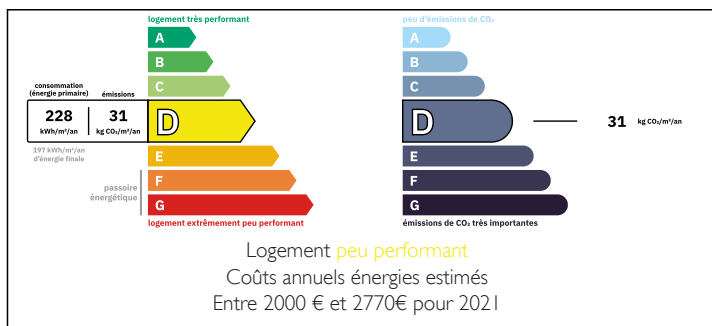
IN BRIEF

Calm spot for this bungalow with basement/garage, surrounded by 1000m² of fully closed garden.

Situated not far from Lanouaille where you will find local amenities.

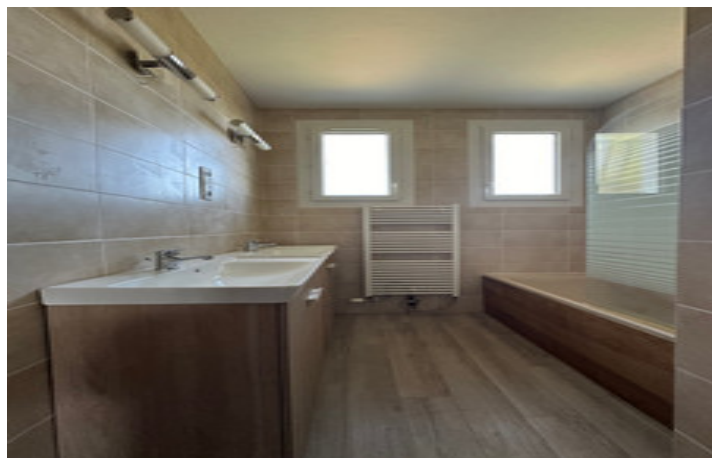
Double glazing, mains drainage, roof in very good condition, wood or oil fuelled heating.

ENERGY - DPE



NB. Quoted prices relate to euro transactions. Fluctuations in exchange rates are not the responsibility of the agency or those representing it. The agency and its representatives are not authorised to make or give guarantees relating to the property. These particulars do not form part of any contract but are to be taken as a general representation of the property. Any areas, measurements or distances are approximate. Text, photographs and plans, where applicable, are for guidance only. Leggett and its representatives have not tested services, equipment or facilities and cannot guarantee the same.

Particulars for off-plan purchases are intended as a guide only. Final finishes to the property may vary. Purchasers are advised to engage a solicitor to check the plans and specifications as laid out in their purchase contract with the developer.



DESCRIPTION

The house offers around 110m² of living space, it is composed of an entrance giving onto a lounge/dining room with fireplace/woodburner, french doors onto a tiled and shaded terrace, fitted kitchen, hallway leading onto 3 bedrooms with dressing, bathroom and separate WC.

Access leading directly to the basement area of 110m² with garage doors and access directly into the garden.

Information about risks to which this property is exposed is available on the Géorisques website : <https://www.georisques.gouv.fr>

LOCAL TAXES

Taxe habitation: EUR

NOTES