

Maison d'habitation sur sous-sol comprenant une chambre, cuisine, salon, salle de bains.

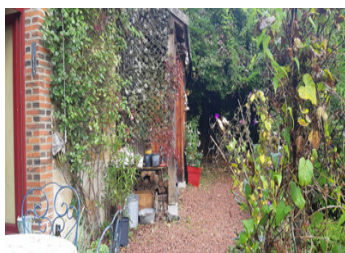
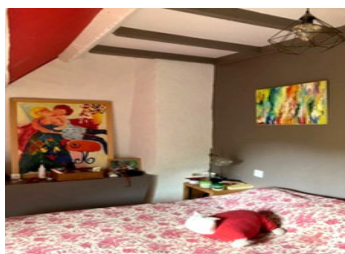


INFORMATION

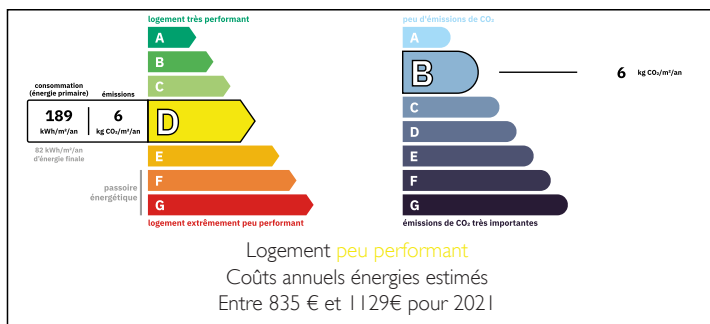
Town:	Gargillesse-Dampierre
Department:	Indre
Bed:	1
Bath:	1
Floor:	68 m2
Plot Size:	413 m2

IN BRIEF

A rare gem tucked away in the heart of the Creuse Valley, in Gargillesse-Dampierre, a Berrichon village listed as one of the most beautiful in France, know for it's acquaintance with one of France's famous authors and her entourage including Chopin whom she lived with.

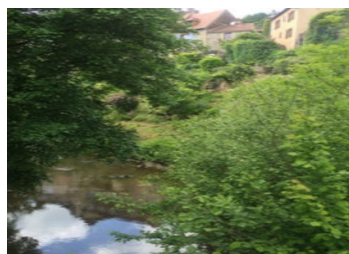
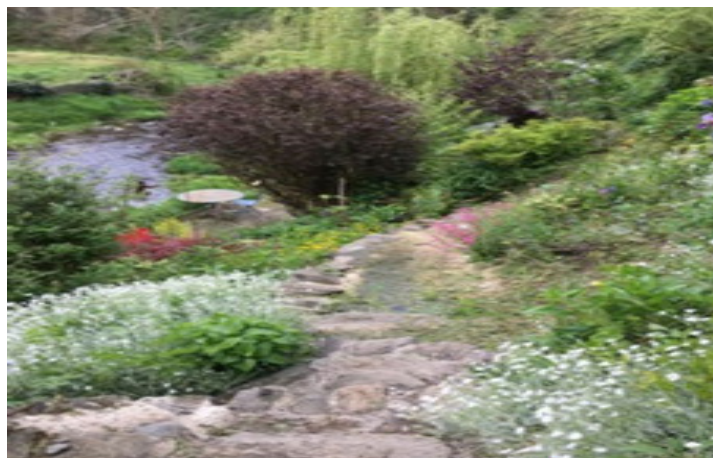


ENERGY - DPE



NB. Quoted prices relate to euro transactions. Fluctuations in exchange rates are not the responsibility of the agency or those representing it. The agency and its representatives are not authorised to make or give guarantees relating to the property. These particulars do not form part of any contract but are to be taken as a general representation of the property. Any areas, measurements or distances are approximate. Text, photographs and plans, where applicable, are for guidance only. Leggett and its representatives have not tested services, equipment or facilities and cannot guarantee the same.

Particulars for off-plan purchases are intended as a guide only. Final finishes to the property may vary. Purchasers are advised to engage a solicitor to check the plans and specifications as laid out in their purchase contract with the developer.



DESCRIPTION

Located at the confluence of the Creuse and Gargilesse rivers, this one-off property offers an exquisite living experience, with authentic charm and natural beauty. Each level offers views of the château and the river.

A rare opportunity to acquire a character property in a place steeped in history and culture, where the charm of the past blends harmoniously with contemporary comfort in a village with amenities and cultural activities.

On the ground floor, a homely kitchen invites you to enjoy the pleasure of cooking and exploring the local cuisine, with direct access to a sunny terrace allowing for al fresco dining in an idyllic setting, surrounded by nature and fabulous views. The garden stretches gracefully down to the river adding to the tranquility of the property.

The first floor :

Sitting room with open fire and a large bathroom.

Under the eaves:

A lovely bedroom with fabulous views out over the river and the XIX century castle.

Others:

- Lively village, restaurants, craft stores, etc.
- Argenton-sur-Creuse / 20min
- A20 / 15min
- 1hr17min

Information about risks to which this property is exposed is available on the Géorisques website : <https://www.georisques.gouv.fr>

LOCAL TAXES

Taxe habitation: EUR

NOTES