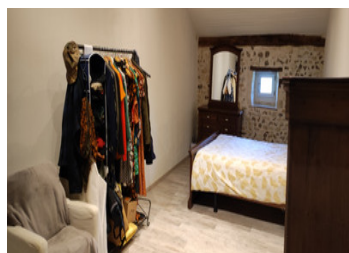


Two renovated stone houses offering a total of 3 bedrooms in a quiet hamlet close to Civray, with garden.



INFORMATION

Town:	Savigné
Department:	Vienne
Bed:	3
Bath:	2
Floor:	174 m ²
Plot Size:	774 m ²

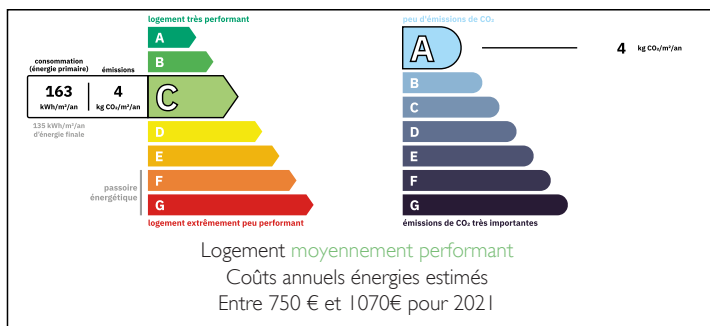


IN BRIEF

Ready to move into these two houses have been renovated to a high standard and offer one and two bedrooms respectively.

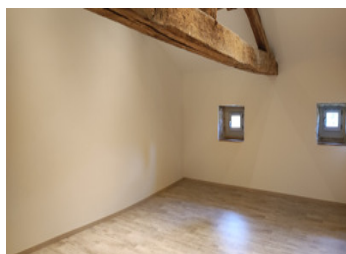
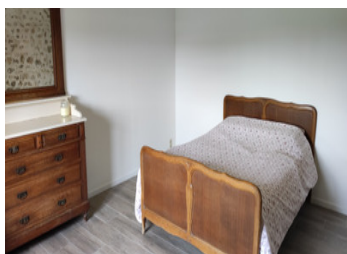
Attached garden and open barn in quiet hamlet close to the popular market town of Civray

ENERGY - DPE



NB. Quoted prices relate to euro transactions. Fluctuations in exchange rates are not the responsibility of the agency or those representing it. The agency and its representatives are not authorised to make or give guarantees relating to the property. These particulars do not form part of any contract but are to be taken as a general representation of the property. Any areas, measurements or distances are approximate. Text, photographs and plans, where applicable, are for guidance only. Leggett and its representatives have not tested services, equipment or facilities and cannot guarantee the same.

Particulars for off-plan purchases are intended as a guide only. Final finishes to the property may vary. Purchasers are advised to engage a solicitor to check the plans and specifications as laid out in their purchase contract with the developer.



DESCRIPTION

House 1 :

Open plan living space with fitted kitchen 25m² and with wood burning stove, shower room 5.3m² with walk-in shower, wash basin and WC

Entrance passageway 8m² with stairs leading to the first floor.

Upstairs :

Bedroom 23m²

Small loftspace 3m² for storage.

This house is being sold furnished.

House two:

Open plan living space with fitted kitchen 40m² and with woodburning stove

Passageway 8m²

store room 2m²

Laundry room 2m²

Shower room 4.5m² comprising of walk-in shower and wash basin.

WC with wash hand basin 1.4m²

Bedroom 17.5m²

Upstairs :

Bedroom 35m²

Loftspace for storage 10m²

Outside :

Garden attached to the two houses

Open barn attached to house 2 which offers 104m² of space

Information about risks to which this property is exposed is available on the Géorisques website : <https://www.georisques.gouv.fr>

LOCAL TAXES

Taxe foncière: **795 EUR**

Taxe habitation: **EUR**

NOTES